

**MAY**

**HIT  
OF THE  
MONTH**

**LIMIT 6  
AFTER LIMIT  
\$2.50 EA.**



**\$1<sup>50</sup>**

**CHEEZ-IT BAKED  
SNACK CRACKERS  
SELECTED VARIETIES  
191/200 G  
21214560\_EA/21350253\_EA**

**LIMIT 6  
AFTER LIMIT  
\$4.50 EA.**



**\$3**

**PLANTERS DELUXE  
WHOLE CASHEWS  
SALTED OR UNSALTED  
200 G  
21021617\_EA/21021618\_EA**



**\$3<sup>50</sup>**

**NEW TREASURE LONG GRAIN  
WHITE RICE  
2 KG  
21596582\_EA**

**LOWEST PRICES  
BEST DEALS**

As compared to other major grocery retailers within your local areas.  
\*\*Must be a registered PC Optimum® member to get this offer.  
Valid from May 1 - 31, 2024. While quantities last. See in-store for details.



Insiders Report™

# Make summer an on-budget breeze

Click or Scan to Discover More



Members save \$2

Optimum  
Members-Only Price™  
**12<sup>99</sup>**  
Non-members  
**\$15**

PC® BURGERS  
SELECTED VARIETIES  
FROZEN  
568 G-1.36 KG  
20941230\_EA/20941443\_EA

Optimum  
**2,000<sup>pt</sup>**  
when you buy 2

\$2 Value



TEXAS HAMBURGER OR  
HOT DOG BUNS  
WHITE OR SESAME  
8'S  
20711614\_EA/20711617\_EA

**3<sup>50</sup>**



Members save \$12

Optimum  
Members-Only Price™  
**12<sup>99</sup>**  
Non-members  
**24<sup>99</sup>**

ROYALE BATHROOM TISSUE  
30=60 ROLLS OR  
TIGER TOWELS 6=12 ROLLS  
21378233\_EA/21484732\_EA

**Want more deals?**  
**Our full flyer lives online**



Scan to see our complete digital flyer



**3<sup>69</sup>**

**PC® ORANGE JUICE, TEA OR LEMONADE**  
 SELECTED VARIETIES  
 1.54 L  
 21430531\_EA/21506771\_EA



**8<sup>99</sup>**

**TIM HORTONS K-CUPS**  
 SELECTED VARIETIES  
 10/12'S  
 20902453\_EA/21004640\_EA



**7<sup>99</sup>**

**NO NAME® EXTRA VIRGIN PURE OR LIGHT OLIVE OIL**  
 750 ML  
 20047715\_EA/20160496002\_EA



**7<sup>99</sup>**

**PC® DE-ALCOHOLIZED BEER**  
 SELECTED VARIETIES  
 12X355 ML  
 20121729\_C12/20325253\_C12



**APP EXCLUSIVE OFFER\***

\*Open your PC Optimum™ app or visit pcoptimum.ca to get the offer

**\$8**  
VALUE

**Up to**  
**8,000<sup>pts</sup>**  
are up for grabs

**Collect**  
**5,000<sup>pts</sup>**  
(1,000 points  
per participating  
product)

**+**

**BONUS**  
**3,000<sup>pts</sup>**  
for buying all five!



Click to open the  
PC Optimum™ app



Ends June 12



Scan to see  
our complete  
digital flyer



**Loblaws**

**Happy Victoria Day**



**SALE**  
**SAVE \$3<sup>50</sup>LB**

**9<sup>99</sup>**  
LB

**FRESH ATLANTIC SALMON FILLETS**  
FAMILY SIZE  
22.02/KG  
FRESH SEAFOOD ITEMS SUBJECT  
TO AVAILABILITY.  
20720065\_KG



**CUT BY OUR BUTCHERS**

**MUST BUY**  
May 16 - 19

**SAVE \$8<sup>11</sup>LB**

**8<sup>88</sup>**  
LB

**STRIPLOIN GRILLING STEAK**  
BONELESS, FAMILY SIZE, CUT FROM  
CANADA AAA OR USDA SELECT GRADE  
BEEF OR HIGHER  
19.58/KG  
20798457\_KG



**SALE**  
**SAVE \$1<sup>10</sup>LB**

**3<sup>99</sup>**  
LB

**GRADE A DUCK**  
FROZEN  
8.80/KG  
20078881\_KG



**SALE**  
**SAVE \$2<sup>50</sup>LB**

**3<sup>99</sup>**  
LB

**PORK BACK RIBS**  
CRYOVAC PKG 2'S  
8.80/KG  
20289672\_KG



**PINT**

**1<sup>99</sup>**

**BLUEBERRIES**  
PRODUCT OF U.S.A.,  
MEXICO OR MOROCCO  
NO. 1 GRADE  
PINT  
20080137001\_EA



**5 LB BAG THAT'S LIKE 79¢ PER LB**

**SALE**  
**SAVE \$3**

**3<sup>99</sup>**

**ONTARIO FARMER'S MARKET™ SWEET POTATOES**  
PRODUCT OF ONTARIO  
5 LB BAG  
20697331001\_EA



**PKG OF 6**

**SAVE 50%**  
**SAVE \$2**

**1<sup>99</sup>**

**ONTARIO FARMER'S MARKET™ MINI CUCCUMBERS**  
PRODUCT OF ONTARIO  
6'S  
20737570001\_EA



**PKG OF 3**

**SALE**  
**SAVE \$1**

**3<sup>99</sup>**

**ONTARIO FARMER'S MARKET™ GREENHOUSE PEPPERS**  
PRODUCT OF ONTARIO  
3'S  
20085851001\_EA



**BUY 2 OR MORE**

**\$3**  
EA.

**WONDER BREAD OR BUNS**  
SELECTED VARIETIES AND SIZES  
20276296\_EA  
20297455\_EA  
20305135\_EA



**SAVE**  
**AT LEAST 75¢**

**3<sup>99</sup>**

**PHILADELPHIA CREAM CHEESE OR DIPS** 227/250 G, KRAFT SINGLES 410 G OR CHEEZ WHIZ 450 G  
SELECTED VARIETIES  
20659606001\_EA  
20866824010\_EA



**SALE**  
**SAVE \$2<sup>20</sup>**

**\$3**

**BREYERS CLASSIC FROZEN DESSERT** 1.66 L OR CHAPMAN'S COLLECTION 6/8'S SELECTED VARIETIES  
FROZEN  
20301305006\_EA/203232375001\_EA



**COCA-COLA OR PEPSI SOFT DRINKS**  
SELECTED VARIETIES  
24X355 ML  
20308197001\_C24  
20306687002\_C24

**11<sup>49</sup>**



**PC® NATURAL SPRING WATER**  
24X500 ML  
20137898\_C24

**2/\$5**  
LESS THAN 2 \$2.99 EA.



**WHEN YOU BUY 2**  
**SAVE 98¢**

**2<sup>99</sup>**

**CAVENDISH FARMS PREMIUM FRIES**  
400-750 G FROZEN OR PC® OR BLUE MENU® KETCHUP 750 ML/L SELECTED VARIETIES  
20090124\_EA/20729779\_EA



**SAVE**  
**AT LEAST \$1**

**2<sup>99</sup>**

**LAY'S POTATO CHIPS, POPPABLES** 130-235 G OR PRINGLES, SUPER STACKS 148-156 G  
SELECTED VARIETIES  
21003823\_EA  
21241032\_EA

See in-store or visit [loblaws.ca](http://loblaws.ca) for holiday store hours.

Flyer prices effective from Thursday, May 16th to Wednesday, May 22nd, 2024. SEE BACK PAGE FOR DETAILS.

Excludes Loblaws 500 Lake Shore Boulevard West.

LSL 1



**PRICE DROP**

**\$2<sup>+</sup>**

PC<sup>®</sup> SALSA  
SELECTED VARIETIES  
430 ML  
20323181001\_EA/20431884001\_EA



**PRICE DROP**

**\$2<sup>+</sup>**

PC<sup>®</sup> TORTILLA CHIPS  
SELECTED VARIETIES  
320-350 G  
20302765\_EA/20305180\_EA



**PRICE DROP**

**\$1<sup>+</sup>**

NONGSHIM NOODLE CUPS  
SELECTED VARIETIES  
75 G  
20032441005\_EA



**10,000<sup>®</sup>**  
for every '50'  
spent on

**\$10 Value**

PAMPERS, WIPES,  
TRAINING PANTS  
OR DIAPERS  
SELECTED VARIETIES  
20304474001\_EA/21370844\_EA



**10,000<sup>®</sup>**  
for every '50'  
spent on

**\$10 Value**

HUGGIES WIPES,  
DIAPERS, PULL UPS  
AND GOODNITES  
TRAINING PANTS  
SELECTED VARIETIES  
20963841\_EA/21456748\_EA



**3,000<sup>®</sup>**  
**\$3 Value**

HUGGIES OR  
PAMPERS DIAPERS  
SELECTED  
VARIETIES  
62-174'S  
21456492\_EA/21551525\_EA

**34<sup>99</sup>**



**Members save \$1.50**

**Optimum**  
**Members-Only Price**  
**2<sup>49</sup>**  
Non-members  
**3<sup>99</sup>**

CHRISTIE KID'S COOKIES  
SELECTED VARIETIES  
180-225 G  
20303703002\_EA/20303703003\_EA



**Members save \$2**

**Optimum**  
**Members-Only Price**  
**2<sup>99</sup>**  
Non-members  
**4<sup>99</sup>**

PC<sup>®</sup> OR BLUE MENU<sup>®</sup>  
ENTRÉES OR BOWLS  
SELECTED VARIETIES  
FROZEN  
212-365 G  
20312253001\_EA/20839096\_EA



**500<sup>®</sup>**

**3<sup>99</sup>**

ASTRO OR YOPLAIT PROTEIN  
YOGURT 625-750 G, SIGGIS  
OR YOPLAIT YOGURT 4X100 G  
SELECTED VARIETIES  
20165226001\_EA/21587047\_EA



**3<sup>99</sup>**

MADEGOOD  
GRANOLA OR  
MORNINGS BARS,  
SOFT BAKED  
COOKIES,  
MINIS OR SQUARES  
110-150 G  
21425468\_EA  
20797052001\_EA



**SALE SAVE \$1**

**5<sup>99</sup>**

LACTANTIA  
BUTTER  
SELECTED VARIETIES  
454 G  
20296112005\_EA  
20639926\_EA



**\$4**

**SALE SAVE \$1**

**\$1**

SHOPSY'S  
DELI-FRESH  
WIENERS  
375 G  
21094890\_EA

SHRIMP SKEWERS  
PLAIN OR MARINATED,  
PREVIOUSLY FROZEN  
55 G  
21204855\_EA



**3<sup>49</sup>**

NO NAME<sup>®</sup> PIZZA  
SELECTED VARIETIES  
FROZEN  
369-411 G  
21541429\_EA/21541441\_EA



**WHEN YOU BUY 2 SAVE \$1.48**

**2/6<sup>50</sup>**  
LESS THAN 2  
**\$3.99 EA.**

FERRERO  
ROCHER  
TABLET  
SELECTED  
VARIETIES  
90 G  
21428863\_EA  
21570452\_EA



**SAVE AT LEAST 95¢**

**4<sup>99</sup>**

NESTLE  
DRUMSTICK  
4'S OR  
CONFECTIONERY  
FROZEN DESSERT  
1.5 L OR  
BARS 4-10'S  
SELECTED  
VARIETIES  
FROZEN  
2032280001\_EA/20324757003\_EA



**SALE SAVE \$1.90**

**2<sup>49</sup>**

CLOVER LEAF  
WHITE TUNA  
SELECTED VARIETIES  
170 G  
20167571\_EA  
20326358001\_EA



**3<sup>99</sup>**

MOTT'S CLAMATO  
JUICE 1.89 L OR  
OCEAN SPRAY  
100% JUICE BLEND  
OR COCKTAIL  
1.89 L  
SELECTED VARIETIES  
20300066008\_EA  
21575320\_EA



**PRICE DROP**

**4<sup>49</sup>**

IRISH SPRING OR  
IVORY BAR SOAP  
6X104 G/ 10X90 G  
OR IRISH SPRING,  
SOFTSOAP OR  
IVORY BODY WASH  
591/621 ML  
SELECTED VARIETIES  
20347887002\_EA  
21219375\_EA

**5<sup>+</sup>**

PUREX LAUNDRY  
DETERGENT  
SELECTED  
VARIETIES  
1.92-2.03 L  
20856516005\_EA

**20% off**

**BULK FOODS**

Variable weight, selected varieties  
in the bulk foods department

**BUY 2**

GENERAL MILLS  
CEREAL  
FAMILY SIZE  
SELECTED VARIETIES  
475-778 G  
21103482\_EA/21103495\_EA

**5<sup>99</sup>**

**GET 1 FREE**

NEILSON MILK  
1%, 2%, SKIM OR  
HOMOGENIZED 3.25%  
4 L  
20047439\_EA/20188873\_EA

CUSTOMER RELATIONS 1-800-296-2332 VISIT [loblaws.ca](http://loblaws.ca) FOR STORE HOURS. Loblaws on Loblaws on

Please call Customer Relations at 1-800-296-2332 or visit our website at [loblaws.ca](http://loblaws.ca) for your particular store's hours and for a list of the Loblaws® locations that DO NOT participate in this flyer, see [http://www.loblaws.ca/en\\_CA/company-policy/terms-and-conditions.html](http://www.loblaws.ca/en_CA/company-policy/terms-and-conditions.html). Quantities and/or selection of items may be limited and may not be available in all stores. No Rainchecks OR Substitutions on clearance items or where quantities are advertised as limited. Advertisements and product selection (flavour, colour, patterns, style) may vary by store location. We are not obligated to sell items based on errors or misprints in typography or photography. Pricing: All references to "Save, Was, Now, Savings, etc." is in comparison to our own regular prices. Coupons must be presented and redeemed at time of purchase. Savings on items shown may vary in each store location. Applicable taxes, deposits, or environmental surcharges are extra. No sales to retail outlets. ©/™ The trademarks, service marks and logos displayed in this flyer are trademarks of Loblaws Inc. and others. All rights reserved. © 2024 Loblaws Inc. MasterCard and the MasterCard Brand Mark are registered trademarks and PayPass is a trademark of MasterCard International Incorporated. President's Choice Bank is a licensee of marks. PC Optimum™ program is provided by President's Choice Services Inc. President's Choice Financial MasterCard is provided by President's Choice Bank. President's Choice Financial personal banking services are provided by the direct banking division of Simplii Financial. ©PC, President's Choice, PC Financial and President's Choice Financial are registered trademarks of Loblaws Inc. Trademarks used under licence. We reserve the right to limit quantities to reasonable family requirements. PC OPTIMUM MEMBERS ONLY: These offers are only available to valid PC Optimum™ program members. Membership is free. To register as a PC Optimum™ member, see in-store or visit [pcoptimum.ca](http://pcoptimum.ca). We are not obligated to award points based on errors or misprints. No cash value. See [loblaws.ca](http://loblaws.ca) for full program details including redemption restrictions Minimum redemption 10,000 points. These offers cannot be combined with any other coupons, discounts or promotions and no adjustments on previous purchases. We reserve to modify or cancel these offers without notice. Product availability may vary by store. While supplies last. We reserve the right to limit quantities. \*Receive the points specified when you spend the qualifying dollar amount on the displayed participating product(s) and/or category(ies) before taxes and after redemptions and all coupons and discounts are deducted in a single transaction; \*\* Valid for flyer duration, after which the price will be the same for both PC Optimum™ and non-PC Optimum™ members. Taxes applicable on the purchase amount after discounts. PC Optimum™ member pricing is not applicable to any price match programs for participating stores operating under the Loblaws Inc. banner. †PRICE DROP offer valid in-store at participating locations between May 16 - June 12, 2024 before applicable taxes and while quantities last. Offer applies only to select products. Offer may be modified and/or cancelled without notice. See in-store for full details.

LSL BACK



# Produce



**PC<sup>®</sup> EXTRA LARGE RED SEEDLESS GRAPES**  
PRODUCT OF CHILE,  
NO. 1 GRADE  
8.80/KG  
20159199001\_KG

**3<sup>99</sup>**  
LB



**ONTARIO ASPARAGUS**  
PRODUCT OF ONTARIO,  
CANADA NO. 1 GRADE  
11.00/KG  
20174581001\_KG

**4<sup>99</sup>**  
LB



**CORN**  
PRODUCT OF U.S.A.,  
NO. 1 GRADE  
EACH  
20131170001\_EA

**79¢**



**FARMER'S MARKET<sup>™</sup> GRAPE TOMATOES**  
PRODUCT OF MEXICO  
283 G  
21367888001\_EA

**1<sup>99</sup>**



**FARMER'S MARKET<sup>™</sup> MINI CARROTS** 2 LB BAG  
PRODUCT OF U.S.A.,  
NO. 1 GRADE OR  
**YELLOW ONIONS** 3 LB BAG  
PRODUCT OF CANADA, CANADA  
NO. 1 GRADE  
20031454001\_EA/  
20811934001\_EA

**3<sup>99</sup>**



**SEEDLESS WATERMELONS**  
PRODUCT OF U.S.A. OR MEXICO  
EACH  
20067326001\_EA

**7<sup>99</sup>**



**RED MANGO**  
PRODUCT OF MEXICO  
EACH  
20059635001\_EA

**99¢**



**JUMBO CHERRIES**  
PRODUCT OF U.S.A.  
19.82/KG  
20159690001\_KG

**8<sup>99</sup>**  
LB



**ARTE SALAD BLEND KITS**  
PRODUCT OF CANADA  
SELECTED VARIETIES  
315-359 G  
21560158\_EA/  
21560200\_EA

**2/\$11**  
LESS THAN 2  
\$5.99 EA.



**ONTARIO GREENHOUSE TOMATOES ON THE VINE**  
PRODUCT OF ONTARIO  
4.39/KG  
20026703001\_KG

**1<sup>99</sup>**  
LB



**PREMIUM SALADS**  
SELECTED VARIETIES  
245-367 G  
21237366\_EA/21237411\_EA

**MADE FRESH IN-STORE**

**\$7**

# Butcher



**LEAN GROUND BEEF**  
FAMILY SIZE  
16.51/KG  
20357787\_KG

**7<sup>49</sup>**  
LB



**CHICKEN LEGS**  
FAMILY SIZE,  
BACK ATTACHED  
6.59/KG  
20153925\_KG

**2<sup>99</sup>**  
LB



**CANADA PC<sup>®</sup> CHICKEN DRUMSTICKS**  
8'S OR THIGHS BONE-IN 6'S  
AIR CHILLED  
21341035\_EA/21341042\_EA

**\$11**



**ONTARIO BONELESS BLADE POT ROAST**  
CUT FROM CERTIFIED  
ONTARIO CORN FED CANADA  
AA GRADE BEEF OR HIGHER  
19.82/KG  
20797470\_KG

**8<sup>99</sup>**  
LB



**LEAN BEEF MEATBALLS**  
425 G  
21587857\_EA

**\$8**



**MAPLE LODGE FARMS ULTIMATE CHICKEN SAUSAGES**  
SELECTED VARIETIES  
500 G  
21378310\_EA/21378346\_EA

**6<sup>99</sup>**



**SUFRA<sup>®</sup> HALAL GROUND CHICKEN**  
454 G  
21430675\_EA

**\$8**



**PC<sup>®</sup> NATURALLY SMOKED BACON**  
375-500 G OR  
**STREET CART SAUSAGE** 500 G  
SELECTED VARIETIES  
20152629\_EA/21525048\_EA

**5<sup>99</sup>**



**PC<sup>®</sup> PIES** 300/300 G OR  
**JANES PUB STYLE BREADED**  
700 G CHICKEN  
SELECTED VARIETIES  
FROZEN  
20003749\_EA/  
21191828\_EA

**14<sup>99</sup>**



**PC<sup>®</sup> HORS D'OEUVRES<sup>™</sup> COLLECTION**  
SELECTED VARIETIES  
FROZEN  
225-800 G  
20698133\_EA/  
21116020\_EA

**2/\$20**  
LESS THAN 2  
\$10.99 EA.

# Seafood

Fresh seafood items subject to availability.



**TUNA STEAKS**  
FROZEN OR PREVIOUSLY FROZEN  
29.74/KG  
20753134\_KG

**13<sup>49</sup>**  
LB

**FRESH ASC TILAPIA FILLETS**  
22.02/KG  
20897812\_KG

**9<sup>99</sup>**  
LB



**SEAQUEST<sup>®</sup> COLOSSAL PACIFIC WHITE SHRIMP**  
RAW ZIPPERBACK<sup>®</sup>  
16-20 PER LB 300 G OR  
**CALAMARI RINGS**  
UNCOOKED 340 G  
FROZEN  
20027170\_EA/21043887\_EA

**7<sup>99</sup>**



**SEAQUEST<sup>®</sup> FISH FILLETS** 400 G OR  
**PC<sup>®</sup> SHRIMP OR FISH CAKES** 170/290 G  
SELECTED VARIETIES  
FROZEN  
20153570\_EA/21001233\_EA

**6<sup>99</sup>**

# Bakery



**FARMER'S MARKET COOKIES**  
SELECTED VARIETIES  
12'S  
20566774\_EA

**5<sup>99</sup>**



**PC S'MORES CREAM PIE**  
FROZEN  
730 G  
21574358\_EA

**10<sup>99</sup>**



**FARMER'S MARKET BUTTER CROISSANTS**  
SELECTED VARIETIES  
6'S  
20975943\_EA

**\$5**



**BAKED IN-STORE**  
**MINI BRAIDED STRUDELS OR MAPLE PECAN DANISH**  
SELECTED VARIETIES  
4'S  
21464142\_EA/21464199\_EA

**4<sup>49</sup>**



**BAKED IN-STORE**  
**BAGUETTE**  
WHITE OR WHOLE WHEAT  
255 G  
21529211\_EA

**1<sup>50</sup>**



**PC FLATBREAD 220/300 G OR SURAJ NAAN 5'S**  
SELECTED VARIETIES  
20910042\_EA/21051353\_EA

**\$3**



**FURLANI TEXAS TOAST, GARLIC OR GARLIC PARM 638 G OR KING'S HAWAIIAN ROLLS 312/340 G**  
SELECTED VARIETIES  
20041579\_EA/214795970\_EA

**4<sup>49</sup>**



**D'ITALIANO BREAD OR BUNS**  
SELECTED VARIETIES AND SIZES  
20038335\_EA/20627101\_EA/20627103\_EA

**BUY 2 OR MORE**  
**3<sup>50</sup>**  
LESS THAN 2 \$3.99 EA.

## Great to go

Great to go items plus applicable taxes.



**CHICKEN, FAJITA, TANDOORI OR GYRO TACO TRAYS**  
SELECTED VARIETIES  
1-1.1 KG  
21395977\_EA/21595419\_EA

**\$20**



**CHICKEN WINGS AND WEDGES BUCKET**  
1.2-2.12 KG  
21541872\_EA/21541877\_EA

**\$28**



**PARTY PLATTERS**  
SELECTED VARIETIES  
696 G/1.8 KG  
21217521\_EA/21217522\_EA

**\$25**



**PC NATURAL CHOICE OR BLUE MENU SLICED DELI MEATS 175 G OR PC CHEESE SLICES 140-170 G**  
SELECTED VARIETIES  
20216643\_EA/20310580\_EA

**6<sup>49</sup>**



**PREMIUM SALADS**  
425-454 G  
21544608\_EA/21544611\_EA

**\$5**



**ZIGGY'S PASTA**  
SELECTED VARIETIES  
1 KG  
21521156\_EA

**10<sup>29</sup>**



**SCHNEIDERS PEPPERETTES**  
SELECTED VARIETIES  
250-375 G  
20976093\_EA/20976110\_EA

**7<sup>99</sup>**  
Non-members **11<sup>99</sup>**



**PC CHICKEN SERVICE CASE MEATS**  
SELECTED VARIETIES  
20301114\_KG

**2<sup>99</sup>**  
/100 G

**BUY RAW SALMON OR CHICKEN ENTRÉES 472-637 G 21533960\_EA/1595451\_EA FROM \$12**

**GET 1 50% OFF RAW SIDE 545-865 G 21595452\_EA**



**NORWEGIAN JARLSBERG CHEESE**  
21388103\_KG

**2<sup>99</sup>**  
/100 G



**BABYBEL 6'S OR THE LAUGHING COW 8'S**  
SELECTED VARIETIES  
20319107\_EA/20574332\_EA

**2/\$9**  
LESS THAN 2 \$4.99 EA.

## Floral



**COLOUR POP DAISIES**  
21437439\_EA

**3/\$30**  
LESS THAN 3 \$12 EA.



**SIGNATURE GIFT BOUQUETS**  
SELECTED VARIETIES  
21436377\_EA/21436378\_EA

**\$25**



**ALOE VERA 4 INCH POT**  
21047366\_EA

**\$8**



**DOUBLE SPIKE ORCHID IN CERAMIC**  
SELECTED VARIETIES  
20997631\_EA

**\$28**



# Garden Centre Open Victoria Day

7AM - 6PM



## Freeman Herbs

Specializing in potted organic herb production year-round, Freeman Herbs began in 1947 as a tender fruit and vegetable farm. In 2004, the neighbouring Hendriks family bought the herb operation located in Beamsville, Ont. and now employ over 140 people. Built on core values which include sustainability and integrity, innovation and technology have been the cornerstone of their growth. Spring production includes proudly certified organic potted herbs, veggies, lavender, Boston ferns and value added live garden products.



**PC\* VEGETABLES IN CAGE**  
SELECTED VARIETIES  
12 INCH  
20753922\_EA/20753957\_EA

**\$18**



**PC\* HERB IN WHISKEY BARREL**  
SELECTED VARIETIES  
10 INCH  
20753949\_EA

**\$20**



**PC\* WINDOW BOX PLANTER**  
SELECTED VARIETIES  
24 INCH  
20753920\_EA

**\$32**



**MIX AND MATCH**  
**PC\* GIGANTICO\* ANNUALS, HERBS OR VEGETABLES**  
SELECTED VARIETIES  
4.33 INCH  
21350302\_EA/21350301\_EA/21352664\_EA  
21350306\_EA/21350305\_EA

**5/\$25**  
LESS THAN 5 \$5.50 EA.



**PC\* JUMBO ANNUAL HANGING BASKET**  
SELECTED VARIETIES  
12 INCH  
20753924\_EA

**2/\$55**  
LESS THAN 2 \$32 EA.



**MIX AND MATCH**  
**PC\* DELUXE ANNUAL HANGING BASKET**  
SELECTED VARIETIES  
11 INCH  
20753924\_EA

**2/\$36**  
LESS THAN 2 \$20 EA.



**PC\* ANNUAL PLANTER**  
SELECTED VARIETIES  
10.8 INCH  
21001606\_EA

**\$26**



**PC\* SUPER GIGANTICO\* ANNUALS**  
SELECTED VARIETIES  
6 INCH  
21352513\_EA

**\$9**



**PC\* 4-SEASON TROPICALS**  
SELECTED VARIETIES  
6 INCH  
21347083\_EA

**\$12**



**TROPICAL PLANTS**  
SELECTED VARIETIES  
10 INCH  
21518651\_EA  
21214925\_EA

**\$30-45**



**CAT PALM**  
SELECTED VARIETIES  
10 INCH  
21517215\_EA  
21518651\_EA

**\$30**



**HIBISCUS**  
SELECTED VARIETIES  
6 INCH  
21346532\_EA

**\$10**



**ASSORTED TROPICALS (SAMBA AND TROPICAL CENTRE)**  
6 INCH  
21517127\_EA  
20642640\_EA

**\$10**



**PC\* CAMPANULA**  
4 INCH  
20642640\_EA

**\$5.50**



**PC\* PERENNIALS**  
SELECTED VARIETIES  
9 CM EACH  
21350463\_EA

**2/\$9**  
LESS THAN 2 \$5 EA.



**PC\* PERENNIALS**  
SELECTED VARIETIES  
13 CM  
21350465\_EA

**2/\$18**  
LESS THAN 2 \$10 EA.



**PC\* PERENNIALS**  
SELECTED VARIETIES  
15 CM EACH  
21350466\_EA

**2/\$26**  
LESS THAN 2 \$15 EA.

## Our plant guarantee

Evergreens\*, trees, shrubs, rose bushes and perennials\* are guaranteed for one full year.

Bring your original receipt and the original plant back to one of our Garden Centres and we will be happy to refund your money. All sales of "reduced to clear" plants are final. \*Does not apply to evergreen and perennial planters in decorative containers.

**100% Canadian grown**

**How do we recycle?**

Empty Pots are shipped back to the greenhouse where they are compacted/ crushed.

Plastic is shredded to make pellets, which are used to make new pots and flats.

Established in 2008.

May 2 - June 19  
bring back your empty pots/flats and you can earn

**100 pts**

for each pot or flat you return



BURPEE OR MCKENZIE SEEDS  
SELECTED VARIETIES  
EACH  
20752992\_EA  
20752876\_EA

**1<sup>89</sup>-5<sup>49</sup>**

SPRING BULBS  
PLANT NOW FOR  
SUMMER BLOOMS,  
SELECTED  
VARIETIES  
EACH  
21423977\_EA  
21426050\_EA

**\$8-17**



SHRUBS OR EVERGREENS  
SELECTED VARIETIES  
2 GALLON  
20217146\_EA  
20217255\_EA

**\$18-40**

GROW YOUR OWN  
SELECTION OF  
FRUITS AND  
VEGETABLES  
SELECTED  
VARIETIES  
EACH  
21430587\_EA  
21430596\_EA

**4<sup>99</sup>-9<sup>99</sup>**

PC<sup>®</sup> FLOWER & GARDEN BED SOIL  
50 L  
21363856\_EA

**2/\$20**  
LESS THAN 2 \$11.50 EA.



PLANT FOOD FERTILIZER OR GRASS SEED  
SELECTED VARIETIES AND SIZES  
21567431\_EA  
21359480\_EA

**\$8-25**

NO NAME<sup>®</sup> ALL PURPOSE SOIL  
50 L  
21358664\_EA

**2/\$20**  
LESS THAN 2 \$11.50 EA.



PC<sup>®</sup> POTTING SOIL  
25 L  
21349090\_EA

**2/\$12**  
LESS THAN 2 \$7 EA.

PC<sup>®</sup> VEGETABLE & HERB SOIL  
25 L  
21349109\_EA

**2/\$12**  
LESS THAN 2 \$7 EA.

PC<sup>®</sup> MOISTURE LOCK POTTING SOIL  
25 L  
21349077\_EA

**\$10**



GARDEN DÉCOR AND POTS  
SELECTED SIZES  
EACH  
21570488\_EA  
21570439\_EA

SEE GARDEN CENTRE FOR RETAILS

GARDEN TOOLS AND WATERING ACCESSORIES  
SELECTED VARIETIES AND STYLES  
EACH  
21570571\_EA  
21570637\_EA

SEE GARDEN CENTRE FOR RETAILS

PC<sup>®</sup> YARD WASTE BAGS  
5'S  
20429880\_EA

**2/\$8**  
LESS THAN 2 \$4.99 EA.

**Our plant guarantee**

Evergreens\*, trees, shrubs, rose bushes and perennials\* are guaranteed for one full year.

Bring your original receipt and the original plant back to one of our Garden Centres and we will be happy to refund your money. All sales of "reduced to clear" plants are final. \*Does not apply to evergreen and perennial planters in decorative containers.

# Long weekend essentials



**TOP SIRLOIN BEEF KEBAB**  
CUT FROM CANADA AA  
GRADE BEEF OR HIGHER  
30.84/KG  
21462765\_KG

**13<sup>99</sup>**  
LB

**TROPICAL FRUIT AND  
VEGETABLE KEBABS**  
SELECTED VARIETIES  
2'S  
21456957\_EA/21456947\_EA

**\$6**



**PC® BURGERS**  
SELECTED VARIETIES, FROZEN  
568 G-1.36 KG  
20941230\_EA/20941443\_EA

Members save  
**\$2**

Optimum  
Members-Only Price  
**12<sup>99</sup>**

Non-members  
**\$15**



**PC® GRILLING RAW  
SHRIMP SKEWERS**  
SELECTED VARIETIES  
FROZEN  
360 G  
21283307\_EA/21517019\_EA

**11<sup>99</sup>**



**DEMPSTER'S  
HAMBURGER OR  
HOT DOG BUNS**  
8'S  
21311477\_EA/21311479\_EA

**3<sup>49</sup>**



MADE FRESH IN-STORE

**40 WINGS  
NAKED OR BREADED**  
AVAILABLE UN-SAUCE  
OR YOUR CHOICE OF SAUCE  
(INCLUDES CELERY &  
CARROTS)  
21558990\_EA

**\$45**



MADE FRESH IN-STORE

**IN-STORE PREPARED  
CLASSIC ITALIAN  
STYLE OR PULLED PORK  
SLIDERS**  
716/853 G  
21562105\_EA/21595416\_EA

**\$15**



MADE FRESH IN-STORE

**SANDWICH  
OR WRAP  
PLATTERS**  
1.1-3.4 KG  
21557919\_EA/  
21558137\_EA

**\$20-25**



**VEGETABLE SAMOSA  
PLATTERS**  
12 PACK  
21558737\_EA

**\$12**



PREPARED IN-STORE

**12-PIECE CHILLED  
PACK OUT WINGS  
WITH ANY PIZZA  
OR FLATBREAD**  
21532556\_EA/21456401\_EA

**\$20**



**COLDCASE SALAD  
PLATTERS**  
20113593\_KG/20788914\_KG

**2<sup>49</sup>**  
/100 G



MADE FRESH IN-STORE

**GOURMET  
BAGUETTE,  
DELUXE SUB  
OR WRAPS  
LARGE  
PLATTER**  
21558211\_EA/  
21558212\_EA

**\$55-65**



MADE FRESH IN-STORE

**FRIED TORTILLA CHIPS**  
450 G OR FRESH  
GUACAMOLE 320 G  
21534615\_EA/21525868\_EA

**\$5**



**PC® SMOKIN'®  
STAMPEDE® BBQ  
SAUCE**  
SELECTED VARIETIES  
500 ML  
21021473\_EA/21021521\_EA

**3<sup>49</sup>**



**PC® MEMORIES OF®  
SAUCE**  
SELECTED VARIETIES  
350 ML  
20311313001\_EA/  
20311313008\_EA

**4<sup>99</sup>**



**PC® CROUTONS**  
SELECTED  
VARIETIES  
140 G  
20796248001\_EA

**2/\$7**  
LESS THAN 2  
\$3.99 EA.



**STONE FIRE NAAN  
CRISPS 170 G OR PC®  
MINI HUMMUS 228 G**  
SELECTED VARIETIES  
20754856\_EA/21569500\_EA

**2/\$7**  
LESS THAN 2  
\$4 EA.



**PC® READY TO EAT  
POPCORN OR KETTLE  
COOKED, LOADS OF  
FLAVOUR OR WORLD  
OF FLAVOUR POTATO  
CHIPS OR PC®  
GARDEN STIX**  
SELECTED VARIETIES  
142-250 G  
20910769\_EA/21422931\_EA

**2/\$6**  
LESS THAN 2  
\$3.49 EA.



**PC® MINI CANS**  
SELECTED VARIETIES  
6X222 ML  
21093763\_KG/21094147\_C06

**2/\$6**  
LESS THAN 2  
\$3.49 EA.



**PC® BLUE MENU  
OR PC® SPARKLING  
WATER**  
SELECTED  
VARIETIES  
12X365 ML  
20668034002\_C01  
21518575\_C01

**2/\$9**  
LESS THAN 2  
\$4.99 EA.

# Long weekend treats



**PC® ICE CREAM SHOP ICE CREAM**  
SELECTED VARIETIES  
FROZEN  
946 ML  
21575127\_EA/21575303\_EA

**\$4**



**PC® BLACK LABEL ICE CREAM**  
SELECTED VARIETIES  
FROZEN  
500 ML  
20604543004\_EA/20604543004\_EA

**\$4**



**PC® COOKIE DOUGH ICECREAM BITES**  
SELECTED VARIETIES FROZEN  
6'S  
21506998\_EA/21507016\_EA

**\$5**



**PC® MOCHI FROZEN DESSERT**  
SELECTED VARIETIES  
6'S  
21166581\_EA/21167338\_EA

**5<sup>49</sup>**



**PC® WAFFLE BOWLS OR CONES**  
SELECTED VARIETIES  
135/205 G  
21263795\_EA/21263798\_EA

**4<sup>49</sup>**



**PC® SYRUP SQUEEZABLE BOTTLE**  
SELECTED VARIETIES  
428 ML  
20338077\_EA/20339669\_EA

**5<sup>49</sup>**



**NO NAME® ICE CREAM SANDWICHES OR BARS**  
CLUB SIZE  
SELECTED VARIETIES  
FROZEN  
24/30'S  
2034740002\_EA/21013432\_EA

**\$10**



**NO NAME® ICE MILK**  
SELECTED VARIETIES  
FROZEN  
4 L  
20015284002\_EA

**7<sup>99</sup>**



**NO NAME® ICE CREAM CONES OR CUPS**  
SELECTED VARIETIES  
75-80 G  
21203830\_EA/21203883\_EA

**\$2**



**CHAPMAN'S SUPER PREMIUM PLUS ICE CREAM**  
SELECTED VARIETIES  
FROZEN  
500 ML  
21511147\_EA/21511200\_EA

**4<sup>99</sup>**



**CHAPMAN'S SUPER NOVELTIES**  
SELECTED VARIETIES  
FROZEN  
20072328002\_EA/20111532\_EA

**5<sup>99</sup>**



**MAGNUM BARS**  
SELECTED VARIETIES  
FROZEN  
4'S  
2034205003\_EA/20950739\_EA

**4<sup>99</sup>**



**NO NAME® WHIPPED TOPPING**  
SELECTED VARIETIES  
FROZEN  
1 L  
20113422001\_EA

**3<sup>99</sup>**



**NO NAME® MARSHMALLOW**  
SELECTED VARIETIES  
400 G  
20304672001\_EA/21023141\_EA

**2/\$7**  
LESS THAN 2 \$3.99 EA.



**PC® CHOCOLATE BARS**  
SELECTED VARIETIES  
90-100 G  
20024823\_EA/20313501\_EA

**2/\$4.50**  
LESS THAN 2 \$2.79 EA.



Insiders Report™

Must Try

Welcome to our Best Summer Yet!

APP EXCLUSIVE OFFER  
Open your PC Optimum™ app or visit pc optimum.ca to get the offer

2,000<sup>pts</sup> \$2 Value



PC<sup>®</sup> FLAVOURED ICE POPS  
SELECTED VARIETIES  
FROZEN  
6X60 ML  
21575381\_EA

\$5



new

APP EXCLUSIVE OFFER  
\*Open your PC Optimum™ app or visit pc optimum.ca to get the offer

\$8 VALUE

Up to 8,000<sup>pts</sup> are up for grabs

Collect 5,000<sup>pts</sup> (1,000 points per participating product)

+ BONUS 3,000<sup>pts</sup> for buying all five!



Click to open the PC Optimum™ app

Ends June 12



APP EXCLUSIVE OFFER  
Open your PC Optimum™ app or visit pc optimum.ca to get the offer

2,000<sup>pts</sup> \$2 Value



PC<sup>®</sup> CHOPPED SALAD KITS  
PRODUCT OF U.S.A.  
SELECTED VARIETIES  
285-369 G  
21378085\_EA

5<sup>99</sup>



Must Try



PC<sup>®</sup> PORK BELLY BURNT ENDS  
FROZEN  
500 G  
21565531\_EA

\$14

Must Try



PC<sup>®</sup> BARESE SAUSAGE  
250 G  
21576127\_EA

\$6

Must Try



PC<sup>®</sup> CHICKEN YAKITORI  
480 G  
21575909\_EA

\$17

Must Try



PC<sup>®</sup> CINNAMON SUGAR OR CHILI LIME PINEAPPLE SKEWERS  
FROZEN  
300 G  
21560146\_EA/21560219\_EA

\$5

Must Try



PC<sup>®</sup> SWEET & SMOKY BARBECUE BUTTERFLIED BLACK TIGER SHRIMP  
FROZEN  
360 G  
21559382\_EA

\$15

Must Try



PC<sup>®</sup> CHEESE OR MUSHROOM FRUSTA  
FROZEN  
2X165 G  
21549514\_EA/21549100\_EA

\$6

Must Try \$5

PC<sup>®</sup> CHICKEN MASALA ON RICE, CHICKEN YELLOW CURRY ON RICE OR CHICKEN BUN CHA  
FROZEN  
300 G  
21565933\_EA/21565869\_EA/21566111\_EA



Must Try



PC<sup>®</sup> BLACK LABEL WHITE BARBECUE SAUCE  
350 ML  
21589265\_EA

4<sup>50</sup>

Must Try



PC<sup>®</sup> M'AQUA COCKTAIL FLAVOURED SPARKLING WATER  
SELECTED VARIETIES  
6X355 ML  
21590669\_C06  
21590689\_C06

4<sup>50</sup>

Must Try



PC<sup>®</sup> CHURRO FLAKE OUTS™  
CROISSANT DONUTS  
224 G  
21590246\_EA

\$7



# Insiders Report™ 100+ new items for summer

Pick them up today



**new**



PC® CREAMY DILL PICKLE SLAW KIT  
301 G  
21588279\_EA

**5<sup>99</sup>**

**new**



PC® TANDORI SEASONED FULLY COOKED WHOLE CHICKEN  
900 G  
21587735\_EA

**12<sup>99</sup>**



Insiders Report™

## Make summer an on-budget breeze



Click or Scan to Discover More



**new**



PC® OAK-SMOKED CITRUS AND GIN SCOTTISH ATLANTIC SALMON  
125 G  
21576457\_EA

**10<sup>99</sup>**

**new**



PC® BRIOCHE SESAME BUNS  
300 G  
21576538\_EA

**4<sup>99</sup>**

**new**



PC® MONTREAL STEAK SPICE SEASONED PIZZA MOZZARELLA AND CHEDDAR CHEESE BLEND  
320 G  
21575868\_EA

**5<sup>99</sup>**

**new**



PC® MILK CHOCOLATE COVERED STRAWBERRIES OR BANANAS  
SELECTED VARIETIES  
FROZEN  
200 G  
21544053\_EA  
21520140\_EA

**5<sup>49</sup>**



PC® STREET CART SAUSAGE CHEDDAR OR ORIGINAL  
500 G  
21525048\_EA/21525049\_EA

**6<sup>99</sup>**

**new**



PC® INBETWEENZ™ DESSERT SQUARE  
SELECTED VARIETIES  
312 G  
21592641\_EA

**\$8**

**new**



PC® FROSTOVERS™ HAND PIE  
SELECTED VARIETIES  
150 G  
21588644\_EA

**4<sup>49</sup>**



PC® SMOKIN' STAMPEDE FUMÉ CORN RIBS  
FROZEN  
500 G  
21520140\_EA

**\$5**

**new**



PC® SPARKLING DEALCOHOLIZED APPLE OR PEAR CIDER BEVERAGE  
SELECTED VARIETIES  
4X330 ML  
21588266\_C04  
21588277\_C04

**7<sup>50</sup>**

**new**



PC® DARK ALE OR IPA LOW ALCOHOL BEER (LESS THAN 0.5% ALC./VOL.)  
4X355 ML  
21588335\_C04  
21589408\_C04

**\$6**



PC® LEMONADE  
SELECTED VARIETIES  
1.89 L  
20772870001\_EA  
21425929\_EA

**2/5<sup>50</sup>**  
LESS THAN 2 \$3.49 EA.

**new**



PC® SAMOSA LAYERED DIP  
350 G  
21588729\_EA

**5<sup>99</sup>**



PC® DIPS OR HUMMUS  
190-227 G OR PC® NAAN DIPPERS 200 G  
SELECTED VARIETIES  
20584097\_EA  
21092033\_EA

**2/\$7**  
LESS THAN 2 \$4 EA.



PC® MINI NAAN  
TRADITIONNAL OR GARLIC  
SELECTED VARIETIES  
4'S  
21076210\_EA  
21076234\_EA

**3<sup>49</sup>**

# Grocery



BETTY CROCKER DUNKAROOS 168 G,  
NATURE VALLEY MUFFIN BAR 175 G,  
NATURE VALLEY CRUNCHY DIP 132 G OR  
PC® BLUE MENU® PEANUT BUTTER 750 G  
SELECTED VARIETIES  
20057669001\_EA/21449886\_EA

**2/\$9**  
LESS THAN 2  
\$5.49 EA.



QUAKER CEREAL  
SELECTED VARIETIES  
288-500 G  
20637355\_EA/21082500\_EA

**4<sup>29</sup>**



STARBUCKS  
COFFEE ENHANCERS  
SELECTED VARIETIES  
828 ML  
21359473\_EA/21436900\_EA

**6<sup>99</sup>**



KOZY SHACK  
RICE PUDDING  
SELECTED VARIETIES  
452-678 G  
20323829001\_EA/20325154001\_EA

**3<sup>99</sup>**



STARBUCKS ICED  
COFFEE 1.18/1.42 L OR  
IÖGO YOGURT 16X100 G  
SELECTED VARIETIES  
20609583001\_EA/21215530\_EA

**7<sup>99</sup>**



BLACK DIAMOND  
CHEESE BARS  
400 G OR SHREDS  
300-320 G  
SELECTED VARIETIES  
20297818003\_EA/21279221\_EA

**6<sup>99</sup>**



GAY LEA SOUR CREAM  
SELECTED VARIETIES  
500 ML  
20317536001\_EA

**3<sup>49</sup>**



CRACKER BARREL  
CHEESE SLICES  
SELECTED VARIETIES  
220/240 G  
21290705\_EA

**4<sup>99</sup>**



MISS VICKIE'S  
KETTLE COOKED  
POTATO CHIPS  
OR SMARTFOOD  
POPCORN  
SELECTED  
VARIETIES  
150-250 G  
21240703\_EA  
20972859\_EA

**2/\$10**  
LESS  
THAN 2  
\$5.49 EA.



CHRISTIE  
RITZ, WHEAT  
THINS OR  
TRISCUIT  
CRACKERS  
SELECTED  
VARIETIES  
175-454 G  
21030905\_EA  
21547034\_EA

**2/7<sup>50</sup>**  
LESS  
THAN 2  
\$3.99 EA.



PC® CRACKERS  
142-225 G OR  
SWISS STICKS  
100 G  
SELECTED  
VARIETIES  
20538543003\_EA  
20588938003\_EA

**3<sup>49</sup>**



DARE  
ULTIMATE COOKIES,  
VIVA PUFFS, WHIPPET  
OR WAGON WHEELS  
SELECTED VARIETIES  
230-360 G  
20025850002\_EA  
20419986001\_EA

**2/\$7**  
LESS THAN 2  
\$4.29 EA.



TETLEY TEA 80'S OR  
1850 GROUND OR  
BEAN COFFEE 340 G  
SELECTED VARIETIES  
20711164\_EA/21196935\_EA

**8<sup>99</sup>**



BALZAC'S GROUND OR  
WHOLE BEAN COFFEE  
300/340 G OR  
DAVID'S TEA  
MATCHA SINGLE  
SERVE 78 G  
SELECTED  
VARIETIES  
20987612\_EA  
21405691\_EA

**12<sup>99</sup>**



JORDANS CEREAL  
SELECTED VARIETIES  
375-400 G  
21522230\_EA/21522267\_EA

**4<sup>99</sup>**



QUE PASA CHIPS,  
TACO SHELLS  
130/350 G OR  
SALSA 420 ML  
SELECTED VARIETIES  
21031316\_EA/21410537\_EA

**3<sup>49</sup>**



LYSOL TOILET CLEANER  
710-950 ML,  
LYSOL ALL PURPOSE  
CLEANERS  
650 ML/1.2 L OR  
LYSOL GEL 4'S  
SELECTED VARIETIES  
20310677001\_EA  
20309873002\_EA

**2/\$8**  
LESS THAN 2  
\$4.49 EA.



FLEECY FABRIC  
SOFTENER 1.36 L OR  
SHEETS 80'S,  
OXICLEAN STAIN  
REMOVER SPRAYS  
354-636 ML OR  
GEL STICK 183 ML  
SELECTED VARIETIES  
EACH  
20043178\_EA/21311876\_EA

**5<sup>49</sup>**



DOWNY OR GAIN  
FABRIC SOFTENER 2.63 L,  
BOUNCE, BEADS 379 G,  
DOWNY OR GAIN SHEETS  
120-200'S OR  
ZIPLOC MEGA PACK BAGS  
60-260'S  
SELECTED VARIETIES  
21196085\_EA/21549966\_EA

**9<sup>99</sup>**



WHISKAS CAT FOOD  
SELECTED VARIETIES  
1.5/2 KG  
20754051\_EA

**9<sup>99</sup>**

# For your family



JERGENS LOTION, COPPERTONE SUNSCREEN, NIVEA CREAM OR BIORÉ FACE CARE SELECTED VARIETIES AND SIZES 21089622\_EA/21176321\_EA

**SALE**  
**SAVE UP TO**  
**25%**



J.R. WATKINS OR METHOD BODY WASH 532 ML OR J.R. WATKINS OR SOFTSOAP LIQUID HAND SOAP REFILL 828 ML-1.47 L SELECTED VARIETIES 21167194\_EA/21425299\_EA

**6<sup>49</sup>**



DOVE, BATISTE, AVEENO OR GARNIER WHOLE BLENDS HAIR CARE OR STYLING SELECTED VARIETIES AND SIZES 20419882001\_EA/20850398\_EA

**8<sup>99</sup>**



TAMPAX PEARL TAMPONS 18'S, ALWAYS PREMIUM INFINITY FLEX FOAM PADS 16'S OR U BY KOTEX CLICK COMPACT UNSCENTED TAMPONS 16'S SELECTED VARIETIES AND SIZES 21284541\_EA/21287976\_EA

**2/\$8**  
**LESS THAN 2**  
**\$4.99 EA.**



ASPIRIN 100/120'S, ALEVE 40-100'S, ALEVE-X 72 G, TYLENOL 72-150'S, MOTRIN 60/150'S OR ADVIL 40-72'S PAIN RELIEF TABLETS, CAPLETS, GELS OR RUB SELECTED VARIETIES 21532778\_EA/20328051\_EA

**15<sup>99</sup>**



HEAD & SHOULDERS 370 ML, OLD SPICE 400 ML OR HERBAL ESSENCE 400-600 ML HAIR CARE SELECTED VARIETIES AND SIZES 21505016\_EA

**5<sup>99</sup>**



DIAL BODY WASH 473 ML, FOAMING LIQUID HAND SOAP 221 ML OR LIFE BRAND LIQUID HAND SOAP 950 ML SELECTED VARIETIES 21311819\_EA/21357582001\_EA

**2<sup>99</sup>**



ALWAYS DISCREET 10-54'S OR TENA 12-48'S INCONTINENCE UNDERWEAR OR PADS SELECTED VARIETIES AND SIZES 20814896\_EA/210333778\_EA

**16<sup>99</sup>**



SENSODYNE RAPID RELIEF OR REPAIR AND PROTECT TOOTH PASTE 84-96'S, ORAL-B BATTERY TOOTHBRUSH, CREST PRO HEALTH OR SCOPE MOUTHWASH OR CREST GUM DETOXIFY TOOTH PASTE SELECTED VARIETIES AND SIZES 20437569002\_EA/205598749\_EA

**7<sup>49</sup>**



SIX STAR WHEY PROTEIN SELECTED VARIETIES 821/907 G 21559849\_EA/21559977\_EA

**\$5 Value**  
**5,000<sup>00</sup>**



COLGATE OPTIC WHITE OR SENSITIVE PRO RELIEF TOOTH PASTE 70-133 ML, BATTERY TOOTHBRUSHES, MANUAL TOOTHBRUSHES, HELLO TOOTH PASTE 82-98 ML OR COLGATE PERIOGARD TOOTH PASTE SELECTED VARIETIES 21220587\_EA/21517424\_EA

**5<sup>99</sup>**



# For your baby



PC® CLUB PACK® BABY WIPES 1200'S, HUGGIES, PAMPERS 6, 9, 10'S OR BABY WIPES 336-720'S SELECTED VARIETIES 21432245\_EA

**\$20**



HELLO BELLO OR MILLIE MOON DIAPERS SELECTED VARIETIES, CLUB SIZE 21280046\_EA/21520459\_EA

**24<sup>99</sup>**



ENFAMIL A+ BABY FORMULA POWDER REFILL STAGE 1 & STAGE 2 SELECTED VARIETIES 992 G 20435527002\_EA/20435527003\_EA

**54<sup>99</sup>**



PC® ORGANICS BABY FOOD POUCHES SELECTED VARIETIES 128 ML 20651248004\_EA/210651270002\_EA

**5/\$7**  
LESS THAN 5 \$1.79 EA.



BABY GOURMET SNACKS AND BARS 40-90 G OR JARS 113 ML SELECTED VARIETIES 21123961\_EA/21414273\_EA

**20%**  
SALE SAVE UP TO



Q-TIPS COTTON SWABS 500'S 20323077001\_EA

**4<sup>49</sup>**



SIMILAC STAGE 1 & 2 READY TO FEED BABY FORMULA SELECTED VARIETIES 16X235 ML 21334696\_C01/21334752\_C01

**51<sup>99</sup>**



HELLO BELLO 10X WIPES SELECTED VARIETIES 600'S 21280051\_EA

**19<sup>99</sup>**

**Pampers**

UP TO **100%** LEAKPROOF PROTECTION

**34<sup>99</sup>** Swaddlers diapers selected varieties and sizes 21455869\_EA

**36<sup>99</sup>** Easy Ups Training Pants selected varieties and sizes 21089194\_EA

**26<sup>99</sup>** Ninjamas Nighttime Underwear selected varieties and sizes 21308929\_EA

**pull-Ups**

SIMPLIFY THE POTTY TRAINING JOURNEY

**\$36<sup>99</sup>**  
Pull-Ups® training pants selected varieties 66-104's 21021427\_EA

**HUGGIES**

natural care

DO NOT FLUSH

**Thicker & more absorbent**  
for a gentle clean\*

**\$8<sup>99</sup>**  
Huggies® wipes selected varieties 168-192's 20558604\_EA

# Beer & cider

limited time offer May 16 - 22



## Savvy Buys



**COORS ORIGINAL**  
6X473 ML CANS  
21294687\_C06

**16<sup>95</sup>**



**STELLA ARTOIS**  
473 ML CAN  
21337003\_EA

**3<sup>45</sup>**



**PABST BLUE RIBBON**  
473 ML CAN  
20954813\_EA

**2<sup>10</sup>**



**SOMERSBY APPLE CIDER**  
4X473 ML CANS  
21313146\_C04

**12<sup>55</sup>**

## Imports



**CORONA EXTRA**  
6X330 ML BOTTLES  
21338460\_C06

**15<sup>65</sup>**



**SAPPORO**  
6X500 ML CANS  
21014346\_C06

**17<sup>95</sup>**

## Explore



**BALL'S FALLS SESSION IPA**  
473 ML CAN  
21009874\_EA

**3<sup>25</sup>**



**GLB OCTOPUS WANTS TO FIGHT IPA**  
473 ML CAN  
21185170\_EA

**3<sup>35</sup>**

**Only at the following Loblaws locations** (unless otherwise stated) : 472 Bayfield St., Barrie, 2375 Hwy #2, Bowmanville, 12 Hurontario St., Collingwood, 380 The East Mall, Etobicoke, 1100 Princess St. and 1048 Midland Ave., Kingston, 400 Kent St. W., Lindsay, 3040 Wonderland Rd. S. and 1740 Richmond St. N., London, 200 Bullock Dr., Markham, 5010 Glen Erin Dr., Mississauga, 64 Isabella St., 2085 Carling Ave., 100 McArthur Rd., 3201 Greenbank Rd., 1980 Baseline Rd., 200 Earl Gray Dr., 1460 Merivale Rd., 2210C Bank St. and 363 Rideau St., Ottawa, 1792 Liverpool Rd., Pickering, 250 Lakeshore Rd. W., Port Credit, 3501 Yonge St., North York, 301 High Tec Rd., Richmond Hill, 2280 Dundas St., W., 17 Leslie St., 50 Musgrave St., 10 Lower Jarvis St., 3671 Dundas St. W., 5095 Yonge St., 2877 Bayview Village, 11 Redway Rd., 585 Queen St. W., 650 Dupont St., 12 St. Clair Avenue E. and 301 Moore Avenue, Toronto.

We reserve the right to limit quantities. **Prices include tax and deposit** and may be subject to change without notice. No rainchecks or substitutions. See in-store or [loblaws.ca](http://loblaws.ca) for store hours.

**Please drink responsibly & designate a driver. Don't drink & drive.**

# Seasonal

**BUY 1 GET 1 50% OFF**

LIFE AT HOME OUTDOOR  
DINNERWARE, SERVEWARE  
AND DRINKWARE  
SECOND ITEM MUST BE OF  
EQUAL OR LESSER VALUE  
\$4-24  
21538945\_EA/21541068\_EA



**BUY 1 GET 1 50% OFF**

LIFE AT HOME™ ACCENT, SEAT OR  
HIGH BACK PATIO CUSHIONS  
SELECTED VARIETIES  
SECOND ITEM MUST BE OF EQUAL  
OR LESSER VALUE  
\$16-39  
21527871\_EA/21527880\_EA



PAPLUX CAMP CHAIR  
SELECTED VARIETIES  
21456922\_EA

Members  
save  
**\$10**

Optimum  
Members-Only Price™  
**\$69**  
Non-members  
**\$79**

Optimum  
**6,000** <sup>¢</sup>  
for every '18'  
spent on

**\$6**  
Value

OFF! OR RAID  
INSECT REPELLENT  
SELECTED VARIETIES  
20001279002\_EA/20158572\_EA



PC® BBQ ACCESSORIES, TOOLS, BBQ COVERS  
OR LIGHTERS  
SELECTED VARIETIES  
21524461\_EA/21524356\_EA

**SALE**  
SAVE UP TO  
**30%**



LIFE AT HOME™ OUTDOOR  
SOLAR OR STRING LIGHTS  
SELECTED VARIETIES  
21386987\_EA

**SALE**  
SAVE UP TO  
**30%**



STAR GRILL LUMP  
CHARCOAL  
8.8 LB  
20773869\_EA

**\$11**

HONEYWELL OR  
WESTINGHOUSE FANS  
SELECTED VARIETIES  
20129684\_EA/21449261\_EA



**SALE**  
SAVE UP TO  
**20%**

**BIG  
SUMMER**  
(SMALL PRICES!)

Spend less on the poolside  
styles you crave.

SHOP NOW

**JOE FRESH**

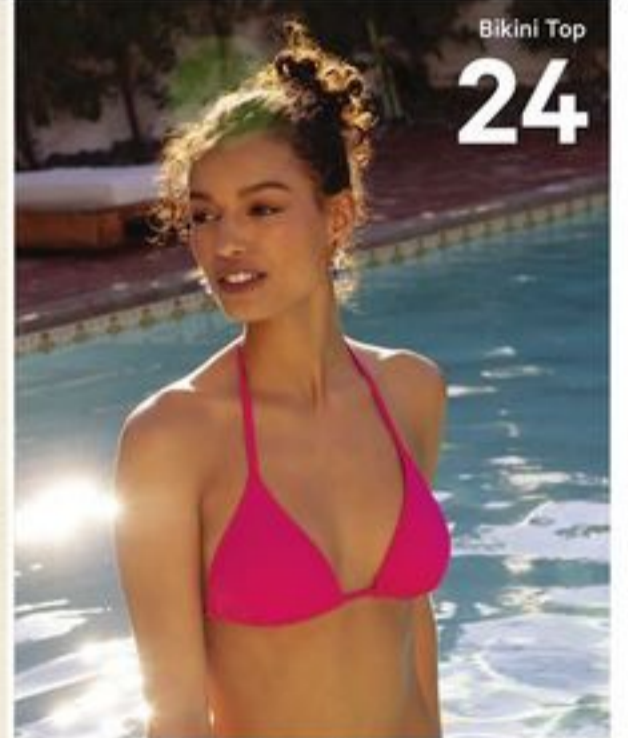
Halter Maxi Dress

**35**



Bikini Top

**24**



Linea Dress

**35**



**MARC ANGELO**

**#1 IMPORTED ITALIAN BRAND**

**MORTADELLA**  
125 g  
21383148\_EA  
**3.99**

**EUROPEAN CHARCUTERIE**  
100 g  
21289363\_EA  
**7.49**

**ANTIPASTO MISTO AND ASSORTED** • 100 g  
20865352\_EA  
**7.49**

**ASSORTED SALAMI CHUBS**  
225 - 300 g  
21362680\_EA/21021493\_EA  
**8.99 - 11.99**

**100% PRODUCT OF ITALY**

\* Refers to the #1 Imported Deli Brand

**yves**  
VEGGIE CUISINE™

**MMMM... PLANTS**

**Great plant-based food.**

**YVES® FAMILY PACK VEGGIE BURGERS**  
20061102\_EA  
**10.99**

**YVES® FAMILY PACK VEGGIE DOGS**  
20032594\_EA  
**6.49**

**YVES® VEGGIE BACON STRIPS**  
20573903\_EA  
**5.49**

Find us in store or online

Yves Veggie Cuisine® is a registered trademark of Hain-Celestial Canada, ULC.

**Sabra**

**SUNNY DAY Snacks**

**SABRA HUMMUS SELECTED VARIETIES**  
283 G  
20103342\_EA  
LESS THAN 2 \$4.49 EA  
**2/\$8**

**SABRA HUMMUS SELECTED VARIETIES**  
482 G  
20103342\_EA  
LESS THAN 2 \$7 EA  
**2/\$12**

**Johnsonville**

**6.99** Smoked Beef Sausage  
Assorted varieties (375 g)

**2/\$13** LESS THAN 2 \$6.99 EA  
Fresh Sausage  
Assorted varieties (250 - 500 g)

**5.99** Smoked Pork Sausage  
Assorted flavours (375 g)

**Dr. Oetker**

**Pizza for everyone TO ENJOY**

**GIUSEPPE PIZZERIA STUFFED FARCIE**

**\$7.99** Giuseppe Stuffed Crust (685 - 771 g)  
21555844\_EA

**PIZZA TRADIZIONALE SALAME ROMANO**

**\$6.49** Tradizionale (385 - 415 g)  
21561829\_EA

**Armstrong**  
NATURAL CHEESE 1902

Bring the Love. Bring Armstrong Cheese.

**4.99** NATURAL CHEESE SLICES  
SELECTED VARIETIES  
220-240 g  
**ARMSTRONG**  
21333850\_EA

**5.99** COMBOS SNACKS  
SELECTED VARIETIES  
180 g  
**ARMSTRONG**  
21440781\_EA

**5.99** NIBBLERS CHEESE SNACKS  
SELECTED VARIETIES  
200 g  
**ARMSTRONG**  
21539032\_EA

**8.99** MOZZARELLISSIMA & LACTOSE FREE MOZZARELLISSIMA BLOCKS  
SELECTED VARIETIES  
500 g  
**SAPUTO**  
20759241002\_EA

**2.49** NACHO QUESO SUPREME & FRENCH ONION  
**HELLUVA GOOD!**  
20872654\_EA

**YOUR ESSENTIALS FOR THE BBQ SEASON**

**15.99** Swiss Chalet BBO or Honey & Garlic Pork Back Ribs (Refrigerated)  
21022221\_EA/21093780\_EA

**15.99** Montana's Texan BBQ Pork Back Ribs (Refrigerated)  
21203458\_EA

# I ♥ Reese's DAY

MAY 18<sup>TH</sup>

Hershey Family Bars, selected varieties (90 - 120 g) 204845\_EA  
**LESS THAN 2 \$3.29 EA. 2/\$5**

Hershey King Size Bars, selected varieties (62 - 85 g) 206880\_EA/207594\_EA  
**LESS THAN 2 \$2.49 EA. 2/\$4.50**

Hershey Single Bars, selected varieties (34 - 58 g) 205002\_EA  
**LESS THAN 2 \$1.79 EA. 2/\$2.50**

4 Bar / Bars, Full Size (Reese's Peanut Butter Cups) 205002\_EA  
**LESS THAN 2 \$5.99 EA. 2/\$9**

Hershey Multi 4 packs, selected varieties (170 - 198 g) 2052405\_EA  
**LESS THAN 2 \$5.99 EA. 2/\$9**

Hershey Packaged Candy, selected varieties (160 - 230 g) 2002597004\_EA/2123284\_EA  
**LESS THAN 2 \$5.99 EA. 2/\$9**

Reese's THINS-MINCES  
Reese's minis

# VAN HOUTTE

LIVE FLAVOURFULLY™

**\$17.99**  
Van Houtte® 30 K-Cup® pods selected varieties 20743469\_EA/21588231\_EA

**\$13.99**  
Van Houtte® ground coffee selected varieties 340 g 20973094\_EA/20973133\_EA

# bai

Bai® selected varieties 530 mL 21362966\_EA  
**LESS THAN 2 \$3.29 EA. 2/\$6**

**NEW**

21433571\_EA  
21362998\_EA  
21362990\_EA  
21583389\_EA

DrinkBaiCanada.com  
Contains Caffeine. Trademark used under license by Canada Dry Mott's Inc.

# Campbell's SNACK INTO Summer

**2/\$7** LESS THAN 2 \$3.99 EA.  
NEW Pepperidge Farm® Goldfish® Crisps 177 g selected varieties 21575178\_EA/21575294\_EA

**3.99**  
Snyder's of Hanover® Pretzels 240 g selected varieties 20316052004\_EA/20316052002\_EA

**2/\$4** LESS THAN 2 \$2.49 EA.  
NEW Kettle Brand® Kettle Cooked Air Fried Chips 156 g selected varieties 21589837\_EA/21589952\_EA

**2/\$7** LESS THAN 2 \$3.99 EA.  
Pepperidge Farm® Goldfish® Crackers 156-227 g, 6x28 G selected varieties 20320900\_EA/21574954\_EA

© 2024 Campbell Company of Canada

# WE'VE GOT THE FLAVOUR

EXPLORE GRILLING RECIPES & TIPS ON OUR FLAVOUR MAKER APP

**6.49**  
CLUB HOUSE® LA GRILLE SEASONING BLENDS AND RUBS SELECTED VARIETIES 120-240 G 20321740001\_EA 20321740002\_EA  
**LESS THAN 2 \$2.49 EA. 2/\$4**

**2.99**  
FRENCH S® MUSTARDS SELECTED VARIETIES 325 - 400 ML 20083238\_EA

**7.99**  
CLUB HOUSE® SEASONING BLENDS SELECTED VARIETIES 111 - 181 G 20300000001\_EA 20300177001\_EA

**4.99**  
FRANK'S REDHOT® HOT SAUCES SELECTED VARIETIES 354 ML 20187432001\_EA 21352012\_EA

**2.99**  
FRENCH S® KETCHUP 750 ML / 1 L STUBBS® BBQ SAUCE 450 ML SELECTED VARIETIES 20035951\_EA 21021214\_EA

**5.49**  
FISH CRISP® COATING MIXES SELECTED VARIETIES 230-340 G 20333502\_EA

**3.49**  
FRENCH S® CREAMY MUSTARD SELECTED VARIETIES 325 ML 21432829\_EA 21432834\_EA

Get great recipe ideas at [clubhouse.ca](http://clubhouse.ca) [frankshredhot.ca](http://frankshredhot.ca)

# RIO MARE

**5.99**  
Rio Mare light tuna selected varieties 3x80 g 20035383\_EA

**3.99**  
Rio Mare tuna salad selected varieties 160 g 20971498\_EA

**Real Italian Taste**

# SAVE On Your Favourite Household Brands

**15.99** Gain laundry detergent 4.55 L/42's, Gain/Downy fabric softener 2.4 L-3.29 L, beads 515 g, Downy/Tide Rinse 48 oz, Bounce Sheets 240's, selected varieties 21405182\_EA/20965291\_EA

**16.99** Tide laundry detergent 3.4 L, Downy fabric softener 2.98-4.16 L, Tide PODS 57/43's, Downy/Gain beads 680 g, selected varieties 21454815\_EA/21549792\_EA

**4.99** Dawn 825 - 982 mL, Dawn EZ Squeeze 535 - 650 mL, Dawn Powerwash Refill 473 mL, selected varieties 21430569\_EA/21516486\_EA

**4.49** Febreze Air 250 g, Car 2 mL, Mr. Clean All Purpose Cleaner 1.2 L, selected varieties 21005017\_EA/20976906\_EA

**12.99** Swiffer Duster Refills 6-10's, Wet Refills 12-24's, Dry Refills 16-32's, selected varieties 21176851\_EA/21176876\_EA

**17.99** Charmin Bath Tissue, 12-48 Rolls, selected varieties 21549779\_EA/21484810\_EA

**17.99** Bounty Paper Towels, 6-12 21515966\_EA

**10.99** Bounty Napkins 400's 21053171\_EA

© 2024 P&G

# Same Size. Less Plastic.

**\$2 Value**

**2,000<sup>PH</sup>**

**\$8.99\***

**SIMPLY ORANGE JUICE**  
2.63 L  
21592119\_EA



**\$2 Value**

**2,000<sup>PH</sup>**

**\$7.49\***

**GOLD PEAK ICED TEA**  
2.63 L  
21592193\_EA



**Made with 12% Less Plastic.**

\*Plus applicable taxes, levies, deposits and fees. Valid at participating locations for a limited time. Subject to availability while supplies last. Retailer may sell for less. <sup>PH</sup>The Coca-Cola Company, used under license.

**START YOUR ACTIVIA GUT HEALTH CHALLENGE**

**2 ACTIVIA PER DAY FOR 14 DAYS**

**NEW** ACTIVIA FIBRE 650g 268864\_EA **\$4.49**

**NEW** ACTIVIA mix&go 2x 100g 268842\_EA **\$4.49**

ACTIVIA vanilla 240g 264728\_EA **\$11.99**

ACTIVIA smoothie 100 mL 2348503\_EA **less than 2 \$2.29 ea. 2/3.50**

ACTIVIA 12x 100g 2030342920\_EA **\$7.49**

ACTIVIA Immune system 8x 100 mL 234352\_EA **\$6.49**

Activia may help reduce the frequency of minor digestive issues like: bloating, gas, discomfort and rumbling when consumed twice\* per day for 2 weeks as part of a balanced diet and healthy lifestyle. \*2 servings.

**CREAMY TEXTURE, ANYTIME, ANYWHERE**

**less than 2 \$2.29 ea. 2/3.50** Oikos® 190 mL 2140298\_EA

**less than 3 \$4.79 ea. 3/\$12** Oikos® 4x 100g 204975005\_EA 204975004\_EA

**\$6.99** Oikos® 550/750g 2100680\_EA

**10-HOUR BREW BOLD AND SMOOTH TASTE**

**less than 2 \$8.99 ea. 2/14.50**

Stok® 1.42 L 21213739\_EA 21213737\_EA

**LOW IN SUGAR BIG ON TASTE**

**\$4.49** Two Good® 4x 95g 21475047\_EA

**\$4.99** Two Good® 625g 2147507\_EA

**DANONE GO!** **DANONE Danino**

**less than 3 \$1.29 ea. 3/\$3** Danone Go® 190 mL 21349387\_EA/21349323\_EA

**less than 2 \$4.49 ea. 2/\$7** Danino® 6x 93 mL 21520245\_EA

Activia® / Danone Go® / Two Good® / Danino® used under lic. © 2024 Die Dairies Danone. Oikos® used under lic. © 2024 Danone US, LLC. Stok® © 2024 WhiteWave Services, Inc. All rights reserved.