

**MAY**

**HIT  
OF THE  
MONTH**

**LIMIT 6  
AFTER LIMIT  
\$2.50 EA.**



**\$1<sup>50</sup>**

**CHEEZ-IT BAKED  
SNACK CRACKERS  
SELECTED VARIETIES  
191/200 G  
21214560\_EA/21350253\_EA**

**LIMIT 6  
AFTER LIMIT  
\$4.50 EA.**



**\$3**

**PLANTERS DELUXE  
WHOLE CASHEWS  
SALTED OR UNSALTED  
200 G  
21021617\_EA/21021618\_EA**



**\$3<sup>50</sup>**

**NEW TREASURE LONG GRAIN  
WHITE RICE  
2 KG  
21596582\_EA**

**LOWEST PRICES  
BEST DEALS**

As compared to other major grocery retailers within your local areas.  
\*\*Must be a registered PC Optimum® member to get this offer.  
Valid from May 1 - 31, 2024. While quantities last. See in-store for details.



Insiders Report™

# Make summer an on-budget breeze

Click or Scan to Discover More



Members save \$3



Optimum

Members-Only Price™

13<sup>99</sup>

Non-members

16<sup>99</sup>

PC® WINGS 700-907 G OR  
BBQ PORK BACK RIBS 680 G  
SELECTED VARIETIES  
FROZEN  
20708932\_EA/20071715\_EA

Optimum

2,000<sup>pt</sup>

when you buy 2

\$2 Value



3<sup>50</sup>

TEXAS HAMBURGER OR  
HOT DOG BUNS  
WHITE OR SESAME  
8'S  
20711614\_EA/20711617\_EA

Members save \$12



Optimum

Members-Only Price™

12<sup>99</sup>

Non-members

24<sup>99</sup>

ROYALE BATHROOM TISSUE  
30=60 ROLLS OR  
TIGER TOWELS 6=12 ROLLS  
21378233\_EA/21484732\_EA

**PRICE  
DROP**



**\$2<sup>#</sup>**

**PC<sup>®</sup> TORTILLA CHIPS**  
SELECTED VARIETIES  
320-350 G

20302765\_EA/20305180\_EA

**PRICE  
DROP**



**\$2<sup>#</sup>**

**PC<sup>®</sup> SALSA**  
SELECTED VARIETIES  
430 ML

20323181001\_EA/20431884001\_EA

**PRICE  
DROP**



**\$1<sup>#</sup>**

**NONGSHIM NOODLE CUPS**  
SELECTED VARIETIES  
75 G

20032441005\_EA

**PRICE  
DROP**



**\$5<sup>#</sup>**

**PUREX LAUNDRY  
DETERGENT**  
SELECTED VARIETIES  
1.92-2.03 L

20856516005\_EA

#Offer valid in-store at participating locations between May 16 - June 12, 2024 before applicable taxes and while quantities last. Offer applies only to select products. Offer may be modified and/or cancelled without notice. See in-store for full details.



**APP EXCLUSIVE OFFER\***

\*Open your PC Optimum™ app or visit pcoptimum.ca to get the offer

**\$8**  
VALUE

**Up to**  
**8,000<sup>pts</sup>**  
are up for grabs

**Collect**  
**5,000<sup>pts</sup>**  
(1,000 points  
per participating  
product)

**+**

**BONUS**  
**3,000<sup>pts</sup>**  
for buying all five!



Click to open the  
PC Optimum™ app



Ends June 12



Scan to see our complete digital flyer



**Dominion**

**Happy Victoria Day**

**PREPARED IN-STORE**

**BURGERS**  
PREPARED IN-STORE  
SELECTED VARIETIES  
17.62/KG  
21550474\_KG

**CUT BY OUR BUTCHERS**

**T-BONE OR WING GRILLING STEAK**  
FAMILY SIZE, CUT FROM  
UNGRADED BEEF  
21.78/KG  
21497208\_KG/21497212\_KG

**MUST BUY**  
May 16 - 19

**7<sup>99</sup>** **9<sup>88</sup>**  
**LB** **LB**

**PORK TENDERLOIN**  
CRYOVAC PKG 2'S  
7.69/KG  
20520970\_KG

**9 LB AVG**

**SEEDLESS WATERMELON**  
PRODUCT OF U.S.A. OR MEXICO  
9 LB AVERAGE  
20067326001\_EA

**SALE** **SALE**  
**SAVE \$2<sup>50</sup>LB** **SAVE \$2**

**3<sup>49</sup>** **6<sup>99</sup>**  
**LB**

**FRESH ATLANTIC SALMON FILLETS**  
FAMILY SIZE  
24.23/KG  
FRESH SEAFOOD ITEMS  
SUBJECT TO AVAILABILITY.  
20720065\_KG

**PKG OF 4**

**FARMER'S MARKET™ SWEET CORN**  
PRODUCT OF U.S.A. NO. 1 GRADE  
4'S  
20348977001\_EA

**SALE** **SALE**  
**SAVE \$2<sup>50</sup>LB**

**10<sup>99</sup>** **4<sup>99</sup>**  
**LB**

**WONDER BREAD OR BUNS**  
SELECTED VARIETIES AND SIZES  
20305674\_EA  
20297455\_EA  
20305135\_EA

**CAVENDISH FARMS PREMIUM FRIES**  
400-750 G FROZEN OR PC® OR BLUE MENU® KETCHUP  
750 ML/1 L  
SELECTED VARIETIES  
20090124\_EA/20729779\_EA

**SCOTSBURN FAMILY FAVOURITES ICE CREAM**  
1.5 L OR CHAPMAN'S COLLECTION 6/8'S  
SELECTED VARIETIES  
FROZEN  
20323757001\_EA/20660078001\_EA

**BUY 2 OR MORE** **SAVE AT LEAST \$1**

**\$3** **2<sup>99</sup>** **\$3**  
**EA.**

**COCA-COLA, CANADA DRY OR PEPSI SOFT DRINKS**  
SELECTED VARIETIES  
12X355 ML  
20318694002\_C12  
20322361002\_C12

**PC® NATURAL SPRING WATER**  
24X500 ML  
20137898\_C24

**LAY'S POTATO CHIPS, POPPABLES**  
130-235 G OR PRINGLES, SUPER STACKS 148-156 G  
SELECTED VARIETIES  
21003823\_EA/21241032\_EA

**WHEN YOU BUY 2** **WHEN YOU BUY 2**  
**SAVE 98¢** **SAVE 98¢**

**6<sup>49</sup>** **2/\$5** **2/\$6**  
**LESS THAN 2 \$2.99 EA.** **LESS THAN 2 \$3.49 EA.**

Flyer prices effective from Thursday, May 16th to Wednesday, May 22nd, 2024. SEE BACK PAGE FOR DETAILS.



**CHRISTIE KID'S COOKIES**  
SELECTED VARIETIES  
180-225 G  
20303703002\_EA/20303703003\_EA

Members save **\$1.50**  
Optimum  
Members-Only Price  
**2.49**  
Non-members  
**3.99**



**PC® OR BLUE MENU®**  
ENTRÉES OR BOWLS  
SELECTED VARIETIES  
FROZEN  
212-365 G  
20312253001\_EA/20839096\_EA

Members save **\$2**  
Optimum  
Members-Only Price  
**2.99**  
Non-members  
**4.99**



**HUGGIES WIPES, DIAPERS, PULL UPS AND GOODNITES TRAINING PANTS**  
SELECTED VARIETIES  
20963841\_EA/21456748\_EA



**PAMPERS, WIPES, TRAINING PANTS OR DIAPERS**  
SELECTED VARIETIES  
20304474001\_EA/21370844\_EA



**HUGGIES OR PAMPERS DIAPERS**  
SELECTED VARIETIES  
62-174'S  
21456492\_EA/21551525\_EA

**34.99**



**LACTANTIA BUTTER**  
SELECTED VARIETIES  
454 G  
20296112005\_EA/20639926\_EA

**5.99**



**SHOPSY'S DELI-FRESH WIENERS**  
375 G  
21094890\_EA

**\$4**



**SHRIMP SKEWERS**  
PLAIN OR MARINATED  
PREVIOUSLY FROZEN  
55 G  
21204855\_EA

**SALE SAVE \$1**  
**\$1**



**ASTRO OR YOPLAIT PROTEIN YOGURT** 625-750 G,  
**SIGGIS OR YOPLAIT YOGURT** 4X100 G  
SELECTED VARIETIES  
20165226001\_EA/21587047\_EA

**3.99**



**FERRERO ROCHER TABLET**  
SELECTED VARIETIES  
90 G  
21428863\_EA/21570452\_EA

**2/6.50**  
LESS THAN 2  
**\$3.99 EA.**



**NESTLÉ DRUMSTICK 4'S OR CONFECTIONERY FROZEN DESSERT** 1.5 L OR BARS 4-10'S  
SELECTED VARIETIES  
FROZEN  
20322380001\_EA/20324757003\_EA

**4.99**



**NO NAME® PIZZA**  
SELECTED VARIETIES  
FROZEN  
369-411 G  
21544429\_EA/21541441\_EA

**3.49**



**CLOVER LEAF WHITE TUNA**  
SELECTED VARIETIES  
170 G  
20167571\_EA/20326358001\_EA

**2.49**



**KETTLE POTATO CHIPS**  
SELECTED VARIETIES  
198 G  
21520692\_EA/21589837\_EA

**2/\$4**  
LESS THAN 2  
**\$2.49 EA.**



**MADEGOOD GRANOLA OR MORNINGS BARS, SOFT BAKED COOKIES, MINIS OR SQUARES**  
SELECTED VARIETIES  
110-150 G  
21425468\_EA/20797052001\_EA

**3.99**

**MOTT'S CLAMATO JUICE**  
1.89 L OR OCEAN SPRAY  
100% JUICE BLEND OR COCKTAIL 1.77 L-1.89 L  
SELECTED VARIETIES  
20300006008\_EA/21575326\_EA

**3.99**



**IRISH SPRING OR IVORY BAR SOAP** 6X104 G/10X90 G OR **IRISH SPRING, SOFTSOAP OR IVORY BODY WASH** 591/621 ML  
SELECTED VARIETIES  
20347887002\_EA/21219375\_EA

**4.49**

**20% off**

**BULK FOODS**

Variable weight, selected varieties in the bulk foods department

**BUY 2**  
**GENERAL MILLS CEREAL**  
FAMILY SIZE  
SELECTED VARIETIES  
475-778 G  
21103492\_EA/21103495\_EA

**5.99**

**GET 1 FREE**

**LIBERTÉ KEFIR OR CLASSIQUE DRINK**  
SELECTED VARIETIES  
1 L  
VALUE OF \$6.99  
21216416\_EA/21431052\_EA



CUSTOMER RELATIONS 1-866-727-0771. VISIT [newfoundlandgrocerystores.ca](http://newfoundlandgrocerystores.ca) FOR STORE HOURS.

Quantities and/or selection of items may be limited and may not be available in all stores. For inquiries on product availability at your store please contact Customer Relations at the above phone number. No Rainchecks OR Substitutions on clearance items or where quantities are advertised as limited. Advertised regular pricing and product selection (flavour, colour, patterns, style) may vary by store location. We are not obligated to sell items based on errors or misprints in typography or photography. Pricing: All references to "Save, Was, Now, Savings, etc." is in comparison to our own regular prices. Coupons must be presented and redeemed at time of purchase. Savings on items shown may vary in each store location. Applicable taxes, deposits, or environmental surcharges are extra. No sales to retail outlets. ©/™ The trademarks, service marks and logos displayed in this flyer are trademarks of Loblaw's Inc. and others. All rights reserved. © 2024 Loblaw's Inc. MasterCard and the MasterCard Brand Mark are registered trademarks and PayPass is a trademark of MasterCard International Incorporated. President's Choice Bank is a licensee of marks. PC Optimum™ program is provided by President's Choice Services Inc. President's Choice Financial MasterCard is provided by President's Choice Bank. President's Choice Financial personal banking services are provided by the direct banking division of Simplii Financial. ©PC, President's Choice, PC Financial and President's Choice Financial are registered trademarks of Loblaw's Inc. Trademarks used under licence. We reserve the right to limit quantities to reasonable family requirements. PC OPTIMUM MEMBERS ONLY: These offers are only available to valid PC Optimum™ program members. Membership is free. To register as a PC Optimum™ member, see in-store or visit [pcoptimum.ca](http://pcoptimum.ca). We are not obligated to award points based on errors or misprints. No cash value. See [newfoundlandgrocerystores.ca](http://newfoundlandgrocerystores.ca) for full program details including redemption restrictions Minimum redemption 10,000 points. These offers cannot be combined with any other coupons, discounts or promotions and no adjustments on previous purchases. We reserve to modify or cancel these offers without notice. Product availability may vary by store. While supplies last. We reserve the right to limit quantities. \*\*Receive the points specified when you spend the qualifying dollar amount on the displayed participating product(s) and/or category(ies) before taxes and after redemptions and all coupons and discounts are deducted in a single transaction. \*\*\* Valid for flyer duration, after which the price will be the same for both PC Optimum™ and non-PC Optimum™ members. Taxes applicable on the purchase amount after discounts. PC Optimum™ member pricing is not applicable to any price match programs for participating stores operating under the Loblaw's Inc. banner. †PRICE DROP offer valid in-store at participating locations between May 16 - June 12, 2024 before applicable taxes and while quantities last. Offer applies only to select products. Offer may be modified and/or cancelled without notice. See in-store for full details.



# Produce



**PC® EXTRA LARGE RED SEEDLESS GRAPES**  
PRODUCT OF CHILE,  
NO. 1 GRADE  
9.90/KG  
20159199001\_KG

**4<sup>49</sup>**  
LB

**CANADA ASPARAGUS**  
PRODUCT OF CANADA,  
CANADA NO. 1 GRADE  
13.21/KG  
20174581001\_KG



**5<sup>99</sup>**  
LB



**CANADA PC® ORGANICS PORTOBELLO MUSHROOM CAPS**  
PRODUCT OF CANADA,  
CANADA NO. 1 GRADE  
4'S  
21005197\_EA

**6<sup>99</sup>**



**FARMER'S MARKET GRAPE TOMATOES**  
283 G PRODUCT OF MEXICO OR  
MINI CUCUMBERS  
6'S PRODUCT OF CANADA  
2136788001\_EA/  
20737570001\_EA

**3<sup>99</sup>**



**FARMER'S MARKET MINI CARROTS**  
PRODUCT OF U.S.A.,  
NO. 1 GRADE  
2 LB  
20031454001\_EA

**6<sup>49</sup>**



**BLUEBERRIES**  
PRODUCT OF MEXICO  
PINT  
20080137001\_EA

**4<sup>49</sup>**



**RED MANGO**  
PRODUCT OF MEXICO  
EACH  
20059635001\_EA

**1<sup>79</sup>**  
Members-Only Price  
**2<sup>49</sup>**  
Non-members



**JUMBO CHERRIES**  
PRODUCT OF U.S.A.  
22.02/KG  
20159690001\_KG

**9<sup>99</sup>**  
LB



**MARZETTI'S DIPS**  
PRODUCT OF U.S.A.,  
SELECTED VARIETIES  
254-340 G  
20080394\_EA/  
20322970\_EA

**2/\$11**  
LESS THAN 2  
\$5.99 EA.



**CANADA GREENHOUSE TOMATOES ON THE VINE**  
PRODUCT OF CANADA  
5.49/KG  
20026703001\_KG

**2<sup>49</sup>**  
LB



**PREMIUM SALADS**  
SELECTED VARIETIES  
245-367 G  
21237366\_EA/21237411\_EA

**MADE FRESH IN-STORE**

**\$7**

# Butcher



**CANADA TOP SIRLOIN OVEN ROAST**  
CUT FROM CANADA AA  
GRADE BEEF OR HIGHER  
26.43/KG  
20796098\_KG

**11<sup>99</sup>**  
LB



**CHICKEN WINGS**  
FAMILY SIZE  
9.46/KG  
20706759\_KG

**4<sup>29</sup>**  
LB



**CHICKEN THIGHS**  
FAMILY SIZE  
8.80/KG  
20707407\_KG

**3<sup>99</sup>**  
LB



**CANADA BEEF STIR FRY STRIPS**  
CUT FROM CANADA AA GRADE  
BEEF OR HIGHER  
250 G  
21588067\_EA

**\$7**



**MARINATED PORK TENDERLOIN**  
11.00/KG  
20636671\_KG

**4<sup>99</sup>**  
LB



**MAPLE LODGE FARMS ULTIMATE CHICKEN SAUSAGES**  
SELECTED VARIETIES  
500 G  
21378310\_EA/21378346\_EA

**6<sup>79</sup>**



**PC® NATURALLY SMOKED BACON** 375-500 G OR  
**PC® STREET CART SAUSAGE** 500 G  
SELECTED VARIETIES  
20152629\_EA/21525048\_EA

**5<sup>99</sup>**



**PC® PIES** 800/900 G OR **JANES PUB STYLE BREADED CHICKEN**  
700 G  
SELECTED VARIETIES  
FROZEN  
20003749\_EA/21191828\_EA

**14<sup>99</sup>**



**Mix and match PC® HORS D'OEUVRES COLLECTION**  
SELECTED VARIETIES  
FROZEN  
225-800 G  
20698133\_EA/21116020\_EA

**2/\$20**  
LESS THAN 2  
\$10.99 EA.

# Seafood

Fresh seafood items subject to availability.



**CAUGHT IN NEWFOUNDLAND COD FILLETS**  
FROZEN OR PREVIOUSLY FROZEN  
19.82/KG  
21210093\_KG

**8<sup>99</sup>**  
LB



**CANADIAN COVE MUSSELS**  
FRESH  
907 G  
21556624\_EA

**5<sup>99</sup>**



**SEAQUEST® COLOSSAL PACIFIC WHITE SHRIMP RAW ZIPPERBACK®**  
16-20 PER LB 300 G OR **CALAMARI RINGS**  
UNCOOKED 340 G FROZEN  
20027170\_EA/21043887\_EA

**7<sup>49</sup>**



**PC® PEI MUSSELS IN SAUCE** 907 G  
SELECTED VARIETIES OR **BATTERED HADDOCK BITES**  
454 G FROZEN  
20838560\_EA/  
21481247\_EA

**10<sup>99</sup>**

# Bakery



**FARMER'S MARKET COOKIES**  
SELECTED VARIETIES  
12'S  
20566774\_EA

**5<sup>99</sup>**



**PC S'MORES CREAM PIE**  
FROZEN  
730 G  
21574358\_EA

**10<sup>99</sup>**



**FARMER'S MARKET BUTTER CROISSANTS**  
SELECTED VARIETIES  
6'S  
20975943\_EA

**\$5**



**MINI BRAIDED STRUDELS OR MAPLE PECAN DANISH**  
SELECTED VARIETIES  
4'S  
21464142\_EA/21464199\_EA

**4<sup>49</sup>**



**BAGUETTE**  
WHITE OR WHOLE WHEAT  
255 G  
21529211\_EA

**1<sup>50</sup>**



**PC FLATBREAD 220/300 G OR SURAJ NAAN 5'S**  
SELECTED VARIETIES  
20910042\_EA/21051353\_EA

**\$3**



**FURLANI TEXAS TOAST, GARLIC OR GARLIC PARM 638 G OR KING'S HAWAIIAN ROLLS 312/340 G**  
SELECTED VARIETIES  
20041579\_EA/21475970\_EA

**4<sup>49</sup>**



**D'ITALIANO BREAD OR BUNS**  
SELECTED VARIETIES AND SIZES  
20626915\_EA/20627101\_EA/  
20627103\_EA

**BUY 2 OR MORE**  
**3<sup>50</sup>**  
LESS THAN 2 \$3.99 EA.

## Great to go

Great to go items plus applicable taxes.



**CHICKEN, FAJITA OR TANDOORI TACO TRAYS**  
SELECTED VARIETIES  
1-1.1 KG  
21395977\_EA/  
21595419\_EA

**\$20**



**CHICKEN WINGS AND WEDGES BUCKET**  
1.2-2.12 KG  
21541872\_EA/21541877\_EA

**\$28**



**PARTY PLATTERS**  
SELECTED VARIETIES  
696 G/1.8 KG  
21217521\_EA/21217522\_EA

**\$25**



**PC NATURAL CHOICE OR BLUE MENU SLICED DELI MEATS 175 G OR PC CHEESE SLICES 140-170 G**  
SELECTED VARIETIES  
20216643\_EA/20310580\_EA

**6<sup>49</sup>**



**PREMIUM SALADS**  
425-454 G  
21544608\_EA/21544611\_EA

**\$5**



**ZIGGY'S PASTA**  
SELECTED VARIETIES  
1 KG  
21521156\_EA

**10<sup>29</sup>**



**SCHNEIDERS PEPPERETTES**  
SELECTED VARIETIES  
250-375 G  
20976093\_EA/  
20976110\_EA

**7<sup>99</sup>**  
Non-members **11<sup>49</sup>**



**PC CHICKEN SERVICE CASE MEATS**  
SELECTED VARIETIES  
20301114\_KG

**2<sup>99</sup>**  
/100 G

**BUY**  
RAW SALMON OR CHICKEN ENTRÉES  
472-637 G  
21533960\_EA/  
1595451\_EA

**FROM \$12**

**GET 1 50% OFF**  
RAW SIDE  
545-865 G  
21595452\_EA



**NORWEGIAN JARLSBERG CHEESE**  
21388103\_KG

**2<sup>99</sup>**  
/100 G



**BABYBEL 6'S OR THE LAUGHING COW 8'S**  
SELECTED VARIETIES  
20319107\_EA/  
20574332\_EA

**2/\$9**  
LESS THAN 2 \$4.99 EA.

## Floral



**COLOUR POP DAISIES**  
SELECTED VARIETIES  
21087808\_EA

**\$9**



**SIGNATURE GIFT BOUQUETS**  
SELECTED VARIETIES  
21087812\_EA/21087813\_EA

**\$25**



**ALOE VERA**  
4 INCH POT  
21047366\_EA

**\$11**



**DOUBLE SPIKE ORCHID IN CERAMIC**  
SELECTED VARIETIES  
EACH  
20293541\_EA

**\$28**



# Garden Centre Open Victoria Day 7AM - 6PM

## Bickerstaffe Farms & Nurseries

Located in picturesque Portugal Cove-St. Philip's, N.L., Bickerstaffe Farms and Nurseries has been a family operation since it first opened in 1994. The farm produces annuals, perennials, fall mums and poinsettias. While they are confined to an island, Bickerstaffe is committed innovating their production and quality. One of its nursery's stars: Calibrachoa (aka Million Bells), a classic and colorful spiller plant for hanging baskets and garden beds that thrives in Newfoundland's challenging climate.





**\$16**

**PC® LILIUM COLLECTION  
IN A DECORATIVE  
COLOUR POT**  
SELECTED VARIETIES,  
SELECT STORES ONLY  
8 INCH  
2059886\_EA



**\$18**

**FARMER'S MARKET™  
EARLY MIX BOWL**  
SELECTED VARIETIES  
SELECT STORES ONLY  
10 INCH  
20753834\_EA



**\$15**

**FARMER'S MARKET™  
PANSY PLANTER**  
SELECTED VARIETIES,  
SELECT STORES ONLY  
8 INCH  
20753926\_EA



**2/\$10**

**PERENNIALS**  
SELECTED VARIETIES,  
SELECT STORES ONLY  
9 INCH  
2134904\_EA

*LESS THAN 2  
\$6 EA.*



**2/\$16**

**PERENNIALS**  
SELECTED VARIETIES,  
SELECT STORES ONLY  
13 CM  
21349045\_EA

*LESS THAN 2  
\$9 EA.*



**\$8-17**

**SPRING BULBS**  
PLANT NOW FOR  
SUMMER BLOOMS  
SELECTED VARIETIES  
EACH  
21423977\_EA  
21426050\_EA



**1<sup>89</sup>-5<sup>49</sup>**

**BURPEE OR  
MCKENZIE SEEDS**  
SELECTED  
VARIETIES  
EACH  
20752992\_EA  
20752876\_EA



**2/\$20**

**NO NAME®  
ALL-PURPOSE  
SOIL**  
50 L  
21358664\_EA

*LESS THAN 2  
\$11.50 EA.*



**4/\$11**

**PC® BLACK  
EARTH SOIL**  
25 L  
21357792\_EA

*LESS THAN 4  
\$3 EA.*



**2/\$8**

**PC® YARD WASTE BAGS**  
5'S  
20429980\_EA

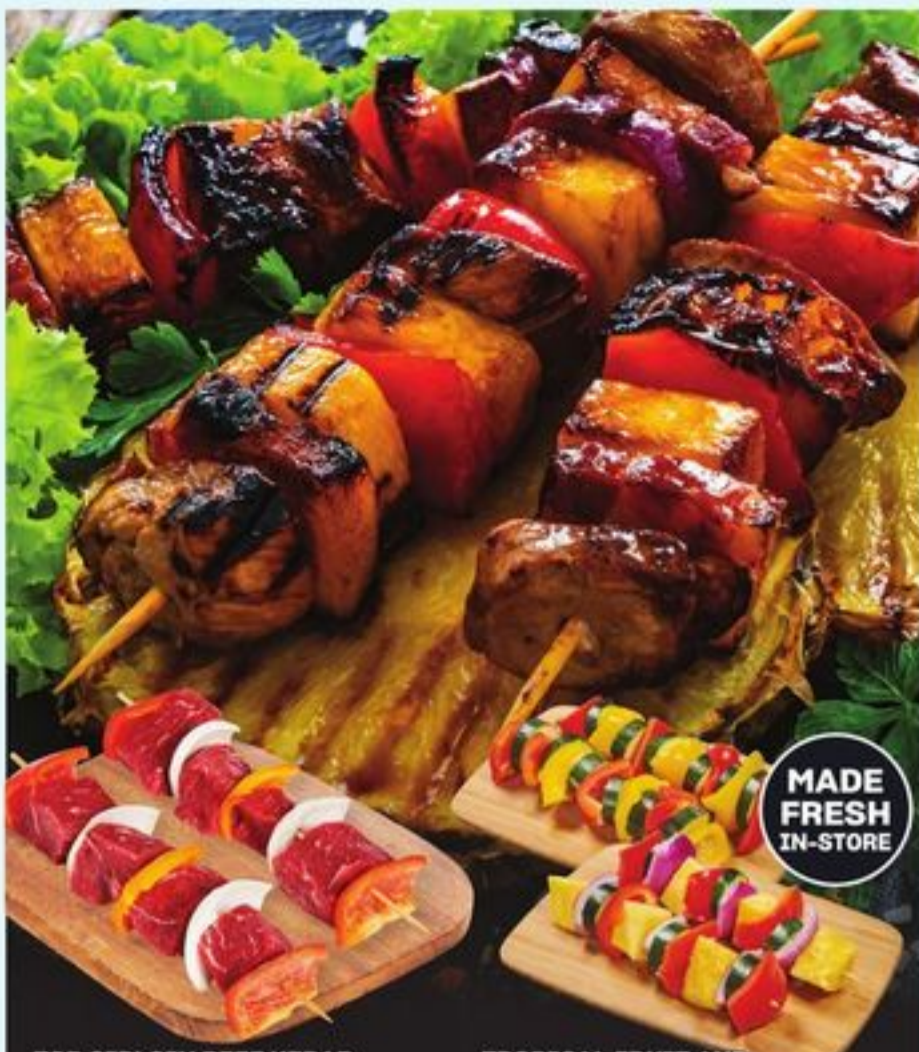
*LESS THAN 2  
\$4.99 EA.*

## Our plant guarantee

**Evergreens\*, trees, shrubs, rose bushes and perennials\*  
are guaranteed for one full year.**

Bring your original receipt and the original plant back to one of our Garden Centres and we will be happy to refund your money. All sales of "reduced to clear" plants are final. \*Does not apply to evergreen and perennial planters in decorative containers.

# Long weekend essentials



**TOP SIRLOIN BEEF KEBAB**  
CUT FROM CANADA AA  
GRADE BEEF OR HIGHER  
30.84/KG  
21462765\_EA

**13<sup>99</sup>**  
LB

**TROPICAL FRUIT AND  
VEGETABLE KEBABS**  
SELECTED VARIETIES  
2'S  
21456957\_EA/21456947\_EA

**\$6**



**Mix and match**

**PC<sup>®</sup> BURGERS**  
SELECTED VARIETIES, FROZEN  
568 G-1.36 KG  
20941230\_EA/20941443\_EA

**2/\$30**  
LESS THAN 2  
\$16.99 EA.



**PC<sup>®</sup> GRILLING RAW  
SHRIMP SKEWERS**  
SELECTED VARIETIES  
FROZEN  
360 G  
21283307\_EA/21517019\_EA

**11<sup>99</sup>**



**DEMPSTER'S  
HAMBURGER OR  
HOT DOG BUNS**  
8'S  
21418959\_EA/21418962\_EA

**3<sup>49</sup>**



**MADE  
FRESH  
IN-STORE**

**40 WINGS NAKED  
OR BREADED**  
AVAILABLE UN-SAUCE  
OR YOUR CHOICE OF  
SAUCE (INCLUDES  
CELERY & CARROTS)  
21559246\_EA

**\$45**



**MADE  
FRESH  
IN-STORE**

**IN-STORE PREPARED  
CLASSIC ITALIAN  
STYLE OR PULLED PORK  
SLIDERS**  
716/853 G  
21562105\_EA/21595416\_EA

**\$15**



**MADE  
FRESH  
IN-STORE**

**SANDWICH  
OR WRAP  
PLATTERS**  
1.1-3.4 KG  
21557919\_EA/  
21558137\_EA

**\$20-25**



**VEGETABLE SAMOSA  
PLATTERS**  
12 PACK  
21558737\_EA

**\$12**



**PREPARED  
IN-STORE**

**12-PIECE CHILLED  
PACK OUT WINGS  
WITH ANY PIZZA  
OR FLATBREAD**  
21532556\_EA/21456401\_EA

**\$20**



**COLDCASE SALAD  
PLATTERS**  
20113593\_KG/20788914\_KG

**2<sup>49</sup>**  
/100 G



**MADE  
FRESH  
IN-STORE**

**GOURMET  
BAGUETTE,  
DELUXE SUB  
OR WRAPS  
LARGE  
PLATTER**  
21558211\_EA/  
21558212\_EA

**\$55-65**



**MADE  
FRESH  
IN-STORE**

**FRIED TORTILLA CHIPS**  
450 G OR FRESH  
GUACAMOLE 320 G  
21534615\_EA/21525868\_EA

**\$5**



**PC<sup>®</sup> SMOKIN'  
STAMPEDE<sup>®</sup> BBQ  
SAUCE**  
SELECTED VARIETIES  
500 ML  
21021473\_EA/21021521\_EA

**3<sup>49</sup>**



**PC<sup>®</sup> MEMORIES OF<sup>®</sup>  
SAUCE**  
SELECTED VARIETIES  
350 ML  
20311313001\_EA/  
20311313008\_EA

**4<sup>99</sup>**



**PC<sup>®</sup> CROUTONS**  
SELECTED  
VARIETIES  
140 G  
20796248001\_EA

**2/\$7**  
LESS THAN 2  
\$3.99 EA.



**STONE FIRE NAAN  
CRISPS 170 G OR PC<sup>®</sup>  
MINI HUMMUS 228 G**  
SELECTED VARIETIES  
20754856\_EA/21565050\_EA

**2/\$7**  
LESS THAN 2  
\$4 EA.



**PC<sup>®</sup> READY TO EAT  
POPCORN OR KETTLE  
COOKED, LOADS OF  
FLAVOUR OR WORLD  
OF FLAVOUR POTATO  
CHIPS OR PC<sup>®</sup>  
GARDEN STIX**  
SELECTED VARIETIES  
142-250 G  
20910769\_EA/21422931\_EA

**2/\$6**  
LESS THAN 2  
\$3.49 EA.



**PC<sup>®</sup> MINI CANS**  
SELECTED VARIETIES  
6X222 ML  
21093763\_C06/21094147\_C06

**2/\$6**  
LESS THAN 2  
\$3.49 EA.



**PC<sup>®</sup> BLUE MENU  
OR PC<sup>®</sup> SPARKLING  
WATER**  
SELECTED  
VARIETIES  
12X365 ML  
20668034002\_C01  
21518575\_C01

**2/\$9**  
LESS THAN 2  
\$4.99 EA.

# Long weekend treats

**PC® ICE CREAM SHOP**  
ICE CREAM  
SELECTED VARIETIES  
FROZEN  
946 ML  
21575127\_EA/21575303\_EA

**\$4**

**PC® BLACK LABEL**  
ICE CREAM  
SELECTED VARIETIES  
FROZEN  
500 ML  
20604543004\_EA/20604543004\_EA

**\$4**

**PC® COOKIE DOUGH**  
ICE CREAM BITES  
SELECTED VARIETIES FROZEN  
6'S  
21506998\_EA/21507016\_EA

**\$5**

**PC® MOCHI**  
FROZEN DESSERT  
SELECTED VARIETIES  
6'S  
21166581\_EA/21167338\_EA

**5<sup>49</sup>**

**PC® WAFFLE BOWLS OR CONES**  
SELECTED VARIETIES  
135/205 G  
21263795\_EA/21263798\_EA

**4<sup>49</sup>**

**PC® SYRUP**  
SQUEEZABLE BOTTLE  
SELECTED VARIETIES  
428 ML  
20338077\_EA/20339669\_EA

**5<sup>49</sup>**

**NO NAME® ICE CREAM SANDWICHES OR BARS**  
CLUB SIZE  
SELECTED VARIETIES  
FROZEN  
24/30'S  
2034740002\_EA/21013432\_EA

**\$10**

**NO NAME® ICE MILK**  
SELECTED VARIETIES  
FROZEN  
4 L  
20015284003\_EA

**7<sup>99</sup>**

**NO NAME® ICE CREAM CONES OR CUPS**  
SELECTED VARIETIES  
75-80 G  
21203830\_EA/21203883\_EA

**\$2**

**CHAPMAN'S SUPER PREMIUM PLUS ICE CREAM**  
SELECTED VARIETIES  
FROZEN  
500 ML  
21511147\_EA/21511200\_EA

**4<sup>99</sup>**

**CHAPMAN'S SUPER NOVELTIES**  
SELECTED VARIETIES  
FROZEN  
20072328002\_EA/20111532\_EA

**5<sup>99</sup>**

**MAGNUM BARS**  
SELECTED VARIETIES  
FROZEN  
4'S  
20342005003\_EA/20950739\_EA

**4<sup>99</sup>**

**NO NAME® WHIPPED TOPPING**  
SELECTED VARIETIES  
FROZEN  
1 L  
20113422001\_EA

**3<sup>99</sup>**

**NO NAME® MARSHMALLOW**  
SELECTED VARIETIES  
400 G  
20304672001\_EA/21023141\_EA

**2/\$7**  
LESS THAN 2 \$3.99 EA.

**PC® CHOCOLATE BARS**  
SELECTED VARIETIES  
90-100 G  
20024823\_EA/20313501\_EA

**2/\$4.50**  
LESS THAN 2 \$2.79 EA.



Insiders Report™

Must Try

Welcome to our Best Summer Yet!

APP EXCLUSIVE OFFER

Open your PC Optimum™ app or visit pc optimum.ca to get the offer

2,000<sup>pts</sup> \$2 Value



PC<sup>®</sup> FLAVOURED ICE POPS  
SELECTED VARIETIES  
FROZEN  
6X60 ML  
21575381\_EA

\$5



new



APP EXCLUSIVE OFFER

Open your PC Optimum™ app or visit pc optimum.ca to get the offer

\$8 VALUE

Up to 8,000<sup>pts</sup> are up for grabs

Collect 5,000<sup>pts</sup> (1,000 points per participating product)

+ BONUS 3,000<sup>pts</sup> for buying all five!



Click to open the PC Optimum™ app

Ends June 12



APP EXCLUSIVE OFFER

Open your PC Optimum™ app or visit pc optimum.ca to get the offer

2,000<sup>pts</sup> \$2 Value



PC<sup>®</sup> CHOPPED SALAD KITS  
PRODUCT OF U.S.A.  
SELECTED VARIETIES  
285-369 G  
21378085\_EA

5<sup>99</sup>



Must Try



PC<sup>®</sup> PORK BELLY BURNT ENDS  
FROZEN  
500 G  
21565531\_EA

\$14

Must Try



PC<sup>®</sup> BARESE SAUSAGE  
250 G  
21576127\_EA

\$6

Must Try



PC<sup>®</sup> CHICKEN YAKITORI  
480 G  
21575909\_EA

\$17

Must Try



PC<sup>®</sup> CINNAMON SUGAR OR CHILI LIME PINEAPPLE SKEWERS  
FROZEN  
300 G  
21560146\_EA/21560219\_EA

\$5

Must Try



PC<sup>®</sup> SWEET & SMOKY BARBECUE BUTTERFLIED BLACK TIGER SHRIMP  
FROZEN  
360 G  
21559382\_EA

\$15

Must Try



PC<sup>®</sup> CHEESE OR MUSHROOM FRUSTA  
FROZEN  
2X165 G  
21549514\_EA/21549100\_EA

\$6

\$5

Must Try



PC<sup>®</sup> CHICKEN MASALA ON RICE, CHICKEN YELLOW CURRY ON RICE OR CHICKEN BUN CHA  
FROZEN  
300 G  
21565933\_EA/21565869\_EA/21566111\_EA



Must Try



PC<sup>®</sup> BLACK LABEL WHITE BARBECUE SAUCE  
350 ML  
21589265\_EA

4<sup>50</sup>

Must Try



PC<sup>®</sup> M'AQUA COCKTAIL FLAVOURED SPARKLING WATER  
SELECTED VARIETIES  
6X355 ML  
21590669\_C06  
21590689\_C06

4<sup>50</sup>

Must Try



PC<sup>®</sup> CHURRO FLAKE OUTS™  
CROISSANT DONUTS  
224 G  
21590246\_EA

\$7



# Insiders Report™ 100+ new items for summer

Pick them up today



**new**



PC® CREAMY DILL PICKLE SLAW KIT 301 G 21588279\_EA

**5<sup>99</sup>**

**new**



PC® TANDORI SEASONED FULLY COOKED WHOLE CHICKEN 900 G 21587735\_EA

**12<sup>99</sup>**



Insiders Report™

## Make summer an on-budget breeze



Click or Scan to Discover More



**new**



PC® OAK-SMOKED CITRUS AND GIN SCOTTISH ATLANTIC SALMON 125 G 21576457\_EA

**10<sup>99</sup>**

**new**



PC® BRIOCHE SESAME BUNS 300 G 21576538\_EA

**4<sup>99</sup>**

**new**



PC® MONTREAL STEAK SPICE SEASONED PIZZA MOZZARELLA AND CHEDDAR CHEESE BLEND 320 G 21575868\_EA

**5<sup>99</sup>**

**new**



PC® MILK CHOCOLATE COVERED STRAWBERRIES OR BANANAS SELECTED VARIETIES FROZEN 200 G 21544053\_EA 21544055\_EA

**5<sup>49</sup>**



PC® STREET CART SAUSAGE CHEDDAR OR ORIGINAL 500 G 21525048\_EA/21525049\_EA

**6<sup>99</sup>**

**new**



PC® INBETWEENZ™ DESSERT SQUARE SELECTED VARIETIES 312 G 21592641\_EA

**\$8**

**new**



PC® FROSTOVERS™ HAND PIE SELECTED VARIETIES 150 G 21588644\_EA

**4<sup>49</sup>**



PC® SMOKIN' STAMPEDE FUMÉ CORN RIBS FROZEN 500 G 21520140\_EA

**\$5**

**new**



PC® SPARKLING DEALCOHOLIZED APPLE OR PEAR CIDER BEVERAGE SELECTED VARIETIES 4X330 ML 21588266\_C04 21588277\_C04

**7<sup>50</sup>**

**new**



PC® DARK ALE OR IPA LOW ALCOHOL BEER (LESS THAN 0.5% ALC./VOL.) 4X355 ML 21588335\_C04 21589408\_C04

**\$6**



PC® LEMONADE SELECTED VARIETIES 1.89 L 20772870001\_EA 21425929\_EA

**2/5<sup>50</sup>**  
LESS THAN 2 \$3.49 EA.

**new**



PC® SAMOSA LAYERED DIP 350 G 21588729\_EA

**5<sup>99</sup>**



PC® DIPS OR HUMMUS 190-227 G OR PC® NAAN DIPPERS 200 G SELECTED VARIETIES 20584097\_EA 21092033\_EA

**2/\$7**  
LESS THAN 2 \$4 EA.



PC® MINI NAAN TRADITIONNAL OR GARLIC SELECTED VARIETIES 4'S 21076210\_EA 21076234\_EA

**3<sup>49</sup>**

# Grocery



**2/\$9**  
LESS THAN 2  
\$5.49 EA.

BETTY CROCKER DUNKAROOS 168 G,  
NATURE VALLEY MUFFIN BAR 175 G,  
NATURE VALLEY CRUNCHY DIP 132 G OR  
PC® BLUE MENU® PEANUT BUTTER 750 G  
SELECTED VARIETIES  
20057669001\_EA/21449886\_EA



**4<sup>29</sup>**

QUAKER CEREAL  
SELECTED VARIETIES  
288-500 G  
20637355\_EA/21082500\_EA



**6<sup>99</sup>**

**3<sup>99</sup>**

**7<sup>99</sup>**

STARBUCKS  
COFFEE ENHANCERS  
SELECTED VARIETIES  
828 ML  
21359473\_EA/21436900\_EA

KOZY SHACK  
RICE PUDDING  
SELECTED VARIETIES  
452-678 G  
20323829001\_EA/20325154001\_EA

STARBUCKS ICED  
COFFEE 1.18/1.42 L OR  
IÖGO YOGURT 16X100 G  
SELECTED VARIETIES  
20609583001\_EA/21215530\_EA



**6<sup>99</sup>**

**3<sup>99</sup>**

**4<sup>99</sup>**

BLACK DIAMOND  
CHEESE BARS  
400 G OR SHREDS  
300-320 G  
SELECTED VARIETIES  
20297818003\_EA/21279221\_EA

BAXTER OR  
SCOTSBURN SOUR CREAM  
SELECTED VARIETIES  
500 ML  
21381063\_EA/21381251\_EA

CRACKER BARREL  
CHEESE SLICES  
SELECTED VARIETIES  
220/240 G  
21290705\_EA



**2/\$10**  
LESS THAN 2  
\$5.49 EA.

**2/7<sup>50</sup>**  
LESS THAN 2  
\$3.99 EA.

**3<sup>49</sup>**

**2/\$7**  
LESS THAN 2  
\$4.29 EA.

MISS VICKIE'S  
KETTLE COOKED  
POTATO CHIPS  
OR SMARTFOOD  
POPCORN  
SELECTED  
VARIETIES  
150-250 G  
21240703\_EA  
20972859\_EA

CHRISTIE  
RITZ, WHEAT  
THINS OR  
TRISCUIT  
CRACKERS  
SELECTED  
VARIETIES  
175-454 G  
21030905\_EA  
21547034\_EA

PC® CRACKERS  
142-225 G OR  
SWISS STICKS 100 G  
SELECTED VARIETIES  
20538543003\_EA/20588938003\_EA

DARE  
ULTIMATE COOKIES,  
VIVA PUFFS, WHIPPET  
OR WAGON WHEELS  
SELECTED VARIETIES  
230-360 G  
20025850002\_EA  
20419986001\_EA



**8<sup>99</sup>**

**12<sup>99</sup>**

**4<sup>99</sup>**

**3<sup>49</sup>**

TETLEY TEA 80'S OR  
1850 GROUND OR  
BEAN COFFEE 340 G  
SELECTED VARIETIES  
20711164\_EA/21196935\_EA

BALZAC'S GROUND OR  
WHOLE BEAN COFFEE  
300/340 G OR  
DAVID'S TEA  
MATCHA SINGLE  
SERVE 78 G  
SELECTED  
VARIETIES  
20987612\_EA  
21405691\_EA

JORDAN'S CEREAL  
SELECTED VARIETIES  
375-400 G  
21522230\_EA/21522267\_EA

QUE PASA CHIPS,  
TACO SHELLS  
130/350 G OR  
SALSA 420 ML  
SELECTED VARIETIES  
21031316\_EA/21410537\_EA



**2/\$8**  
LESS THAN 2  
\$4.49 EA.

**5<sup>49</sup>**

**9<sup>99</sup>**

**9<sup>99</sup>**

LYSOL TOILET CLEANER  
710 ML-950 ML,  
LYSOL ALL PURPOSE  
CLEANERS  
650 ML/1.2 L OR  
LYSOL GEL 4'S  
SELECTED VARIETIES  
20310679001\_EA  
20309873002\_EA

FLEECY FABRIC  
SOFTENER 1.36 L OR  
SHEETS 80'S,  
OXICLEAN STAIN  
REMOVER SPRAYS  
354-636 ML OR  
GEL STICK 183 ML  
SELECTED VARIETIES  
EACH  
20043178\_EA/21311876\_EA

DOWNY OR GAIN  
FABRIC SOFTENER 2.63 L,  
BOUNCE, BEADS 379 G,  
DOWNY OR GAIN SHEETS  
120-200'S OR  
ZIPLOC MEGA PACK BAGS  
60-280'S  
SELECTED VARIETIES  
21196085\_EA/21549966\_EA

WHISKAS CAT FOOD  
SELECTED VARIETIES  
1.5/2 KG  
20754051\_EA

# For your family



JERGENS LOTION, COPPERTONE SUNSCREEN, NIVEA CREAM OR BIORÉ FACE CARE SELECTED VARIETIES AND SIZES 21089622\_EA/21176321\_EA

**SALE**  
**SAVE UP TO**  
**25%**



J.R. WATKINS OR METHOD BODY WASH 532 ML OR J.R. WATKINS OR SOFTSOAP LIQUID HAND SOAP REFILL 828 ML-1.47 L SELECTED VARIETIES 21167194\_EA/21425299\_EA

**6<sup>49</sup>**



DOVE, BATISTE, AVEENO OR GARNIER WHOLE BLENDS HAIR CARE OR STYLING SELECTED VARIETIES AND SIZES 20419882001\_EA/20850398\_EA

**8<sup>99</sup>**



TAMPAX PEARL TAMPONS 18'S, ALWAYS PREMIUM INFINITY FLEX FOAM PADS 16'S OR U BY KOTEX CLICK COMPACT UNSCENTED TAMPONS 16'S SELECTED VARIETIES AND SIZES 21284541\_EA/21287976\_EA

**2/\$8**  
**LESS THAN 2**  
**\$4.99 EA.**



ASPIRIN 100/120'S, ALEVE 40-100'S, ALEVE-X 72 G, TYLENOL 72-150'S, MOTRIN 60/150'S OR ADVIL 40-72'S PAIN RELIEF TABLETS, CAPLETS, GELS OR RUB SELECTED VARIETIES 20077169001\_EA/20328051\_EA

**15<sup>99</sup>**



HEAD & SHOULDERS 370 ML, OLD SPICE 400 ML OR HERBAL ESSENCE 400-600 ML HAIR CARE SELECTED VARIETIES AND SIZES 21505016\_EA

**5<sup>99</sup>**



DIAL BODY WASH 473 ML, FOAMING LIQUID HAND SOAP 221 ML OR LIFE BRAND LIQUID HAND SOAP 950 ML SELECTED VARIETIES 21311819\_EA/21357582001\_EA

**2<sup>99</sup>**



ALWAYS DISCREET 10-54'S OR TENA 12-48'S INCONTINENCE UNDERWEAR OR PADS SELECTED VARIETIES AND SIZES 20814896\_EA/210333778\_EA

**16<sup>99</sup>**



SENSODYNE RAPID RELIEF OR REPAIR AND PROTECT TOOTHPASTE 84-96'S, ORAL-B BATTERY TOOTHBRUSH, CREST PRO HEALTH OR SCOPE MOUTHWASH OR CREST GUM DETOXIFY TOOTHPASTE SELECTED VARIETIES AND SIZES 20437569002\_EA/205598749\_EA

**7<sup>49</sup>**



SIX STAR WHEY PROTEIN SELECTED VARIETIES 821/907 G 21559849\_EA/21559977\_EA

**\$5 Value**  
**Optimum 5,000<sup>mg</sup>**



COLGATE OPTIC WHITE OR SENSITIVE PRO RELIEF TOOTHPASTE 70-133 ML, BATTERY TOOTHBRUSHES, MANUAL TOOTHBRUSHES, HELLO TOOTHPASTE 82-98 ML OR COLGATE PERIOGARD TOOTHPASTE SELECTED VARIETIES 21220587\_EA/21517424\_EA

**5<sup>99</sup>**

# For your baby



PC® CLUB PACK® BABY WIPES 1200'S,  
HUGGIES, PAMPERS 6, 9, 10'S  
OR BABY WIPES 336-720'S  
SELECTED VARIETIES  
21432245\_EA

**\$20**



HELLO BELLO OR  
MILLIE MOON DIAPERS  
SELECTED VARIETIES, CLUB SIZE  
21280046\_EA/21520459\_EA

**24<sup>99</sup>**



ENFAMIL A+ BABY FORMULA  
POWDER REFILL  
STAGE 1 & STAGE 2  
SELECTED VARIETIES  
992 G  
20435527002\_EA/20435527003\_EA

**54<sup>99</sup>**



PC® ORGANICS  
BABY FOOD POUCHES  
SELECTED VARIETIES  
128 ML  
20651248004\_EA/210651270002\_EA

**5/\$7**  
LESS THAN 5  
\$1.79 EA.



BABY GOURMET SNACKS AND  
BARS 40-90 G OR JARS 113 ML  
SELECTED VARIETIES  
21123961\_EA/21414273\_EA

**20%**  
SALE  
SAVE UP TO



Q-TIPS COTTON SWABS  
500'S  
20323077001\_EA

**4<sup>49</sup>**



SIMILAC STAGE 1 & 2  
READY TO FEED  
BABY FORMULA  
SELECTED VARIETIES  
16X235 ML  
21334696\_C01/21334752\_C01

**51<sup>99</sup>**



HELLO BELLO 10X WIPES  
SELECTED VARIETIES  
600'S  
21280051\_EA

**19<sup>99</sup>**

**Pampers**

UP TO **100%** LEAKPROOF PROTECTION

**34<sup>99</sup>** Swaddlers  
diapers  
selected varieties  
and sizes  
21455869\_EA

**36<sup>99</sup>** Easy Ups  
Training Pants  
selected varieties  
and sizes  
21089194\_EA

**26<sup>99</sup>** Ninjamas  
Nighttime Underwear  
selected varieties  
and sizes  
21308929\_EA

**pull-Ups**

SIMPLIFY THE POTTY TRAINING JOURNEY

**\$36<sup>99</sup>**  
Pull-Ups® training pants  
selected varieties 66-104's  
21021427\_EA

**HUGGIES**

natural care

**\$8<sup>99</sup>**  
Huggies® wipes  
selected varieties  
168-192's  
20558604\_EA

Thicker & more absorbent  
for a gentle clean\*



**Our butchers cut quality meat in your store everyday!**

**pork loin schnitzel**  
21588055\_EA

**beef brisket meatballs plain**  
21587897\_EA

**beef stir fry strips**  
cut from Canada AA grade beef or higher  
21588067\_EA

**pork stir fry strips**  
21588095\_EA

**chicken stir fry strips**  
21588091\_EA

**YVES**  
VEGGIE CUISINE™

**MMMM... PLANTS**

**Great plant-based food.**

**YVES™ FAMILY PACK VEGGIE BURGERS**  
20061102\_EA  
**10.99**

**YVES™ FAMILY PACK VEGGIE DOGS**  
20032594\_EA  
**6.49**

**YVES™ VEGGIE BACON STRIPS**  
20573903\_EA  
**5.49**

Find us in store or online

Yves Veggie Cuisine™ is a registered trademark of Hain-Celestial Canada, ULC.

**Sabra**  
SUNNY DAY Snacks

**SABRA HUMMUS SELECTED VARIETIES**  
283 G  
20103342\_EA  
LESS THAN 2 \$4.49 EA  
**2/\$8**

**SABRA HUMMUS SELECTED VARIETIES**  
482 G  
20103342\_EA  
LESS THAN 2 \$7 EA  
**2/\$12**

**Sabra**  
CLASSIC CLASSIQUE HUMMUS

**Sabra**  
ROASTED RED PEPPER POIVRON ROUGE GRILLÉ HUMMUS

**FAMILY SIZE FORMAT FAMILIAL**

**Johnsonville**

**6.99** Smoked Beef Sausage  
Assorted varieties (375 g)

**5.99** Smoked Pork Sausage  
Assorted flavours (375 g)

**2/\$13** Fresh Sausage  
Assorted varieties (250 - 500 g)

LESS THAN 2 \$6.99 EA

**Dr. Oetker**

**Pizza for everyone TO ENJOY**

**GIUSEPPE PIZZERIA STUFFED FARCIE**  
**\$7.99**  
Giuseppe Stuffed Crust (685 - 771 g)  
21555844\_EA

**PIZZA TRADIZIONALE SALAME ROMANO**  
**\$6.49**  
Tradizionale (385 - 415 g)  
21561829\_EA

**Armstrong**  
1902

**Bring the Love. Bring Armstrong Cheese.**

**4.99** NATURAL CHEESE SLICES  
SELECTED VARIETIES  
220-240 g  
**ARMSTRONG**  
21333850\_EA

**3.99** COTTAGE CHEESE  
500 mL  
**BAXTER/SCOTSBURN**  
20372576003\_EA  
20317595001\_EA

**3.99** SOUR CREAM  
500 mL  
**BAXTER/SCOTSBURN**  
21381092\_EA

**2.49** NACHO QUESO SUPREME & FRENCH ONION  
250 g  
**HELUVA GOOD!**  
20872654\_EA

**8.99** MOZZARELLISSIMA & LACTOSE FREE MOZZARELLISSIMA BLOCKS  
SELECTED VARIETIES  
500 g  
**SAPUTO**  
20759241002\_EA

**YOUR ESSENTIALS FOR THE BBQ SEASON**

**SWISS CHALET**  
PORK BACK RIBS - CÔTES DE DOS DE PORC  
FULLY COOKED AND SEASONED - 19% MEAT PROTEIN  
AGÉCÉLÉCÉ ET ENTÉRIÈREMENT CUITES - 19 % DE PROTÉINES DE VIANDE

**SMOKY BBQ BBQ PUMK**

**HONEY GARLIC MIEL ET AIL**

**10 MIN**

**13.49** Swiss Chalet BBO or Honey & Garlic Pork Back Ribs (Refrigerated)  
21022221\_EA/21093780\_EA

**MONTANA'S BBQ & BAR**  
PORK BACK RIBS CÔTES DE DOS DE PORC  
FULLY COOKED AND SEASONED - 19% MEAT PROTEIN  
AGÉCÉLÉCÉ ET ENTÉRIÈREMENT CUITES - 19 % DE PROTÉINES DE VIANDE

**TEXAS BBQ TEXAN**

**10 MIN**

**13.49** Montana's Texan BBO Pork Back Ribs (Refrigerated)  
21203458\_EA

# I ♥ Reese's DAY

MAY 18<sup>TH</sup>

Hershey Family Bars, selected varieties (90 - 120 g) 2048185\_EA  
**LESS THAN 2 \$3.29 EA. 2/\$5**

Hershey King Size Bars, selected varieties (62 - 85 g) 2091893\_EA/2075740\_EA  
**LESS THAN 2 \$2.49 EA. 2/\$4.50**

Hershey Single Bars, selected varieties (34 - 58 g) 2050002\_EA  
**LESS THAN 2 \$1.79 EA. 2/\$2.50**

4 Bar / Bars (4.5 Bar (Reese's Peanut Butter Cups))  
**LESS THAN 2 \$5.99 EA. 2/\$9**

Hershey Multi 4 packs, selected varieties (170 - 198 g) 20525405\_EA  
**LESS THAN 2 \$5.99 EA. 2/\$9**

Hershey Thins-Minics  
**LESS THAN 2 \$5.99 EA. 2/\$9**

Hershey Packaged Candy, selected varieties (160 - 230 g) 20028970004\_EA/21032804\_EA  
**LESS THAN 2 \$5.99 EA. 2/\$9**

Hershey Big Cup  
**LESS THAN 2 \$3.29 EA. 2/\$5**

Hershey Big Cup (Caramel)  
**LESS THAN 2 \$3.29 EA. 2/\$5**

# VAN HOUTTE

LIVE FLAVOURFULLY™

**\$17.99**  
Van Houtte® 30 K-Cup® pods selected varieties 20743469\_EA/21588231\_EA

**\$13.99**  
Van Houtte® ground coffee selected varieties 340 g 20973094\_EA/20973133\_EA

# bai

Bai® selected varieties 530 mL 21362966\_EA  
**LESS THAN 2 \$3.29 EA. 2/\$6**

**NEW**

21433571\_EA  
21362998\_EA  
21362990\_EA  
21583389\_EA

DrinkBaiCanada.com  
Contains Caffeine. Trademark used under license by Canada Dry Mott's Inc.

# SNACK INTO Summer

**2/\$7** LESS THAN 2 \$3.99 EA.  
NEW Pepperidge Farm® Goldfish® Crisps 177 g selected varieties 21575178\_EA/21575294\_EA

**3.99**  
Snyder's of Hanover® Pretzels 240 g selected varieties 20316052004\_EA/20316052002\_EA

**2/\$4** LESS THAN 2 \$2.49 EA.  
NEW Kettle Brand® Kettle Cooked Air Fried Chips 156 g selected varieties 21589837\_EA/21589952\_EA

**2/\$7** LESS THAN 2 \$3.99 EA.  
Pepperidge Farm® Goldfish® Crackers 156-227 g, 6x28 g selected varieties 20320900\_EA/21574954\_EA

© 2024 Campbell Company of Canada

# WE'VE GOT THE FLAVOUR

EXPLORE GRILLING RECIPES & TIPS ON OUR FLAVOUR MAKER APP

**6.49**  
CLUB HOUSE® LA GRILLE SEASONING BLENDS AND RUBS SELECTED VARIETIES 120-240 G 20321740001\_EA/20321740002\_EA  
**LESS THAN 2 \$2.49 EA. 2/\$4**

**2.99**  
FRENCH S® MUSTARDS SELECTED VARIETIES 325 - 400 ML 20083238\_EA

**7.99**  
CLUB HOUSE® SEASONING BLENDS SELECTED VARIETIES 111 - 181 G 2030000001\_EA/20300177001\_EA

**4.99**  
FRANK'S REDHOT® HOT SAUCES SELECTED VARIETIES 354 ML 20187432001\_EA/21352812\_EA

**2.99**  
FRENCH S® KETCHUP 750 ML / 1 L STUBB'S® BBQ SAUCE 450 ML SELECTED VARIETIES 20035951\_EA/21821214\_EA

**5.49**  
FISH CRISP® COATING MIXES SELECTED VARIETIES 230-340 G 20333502\_EA

**3.49**  
FRENCH S® CREAMY MUSTARD SELECTED VARIETIES 325 ML 21432829\_EA/21432834\_EA

Get great recipe ideas at [clubhouse.ca](http://clubhouse.ca) [frankshredhot.ca](http://frankshredhot.ca)

**5.99**  
Rio Mare light tuna selected varieties 3x80 g 20035383\_EA

**3.99**  
Rio Mare tuna salad selected varieties 160 g 20971499\_EA

# Real Italian Taste

# SAVE On Your Favourite Household Brands

**15.99** Gain laundry detergent 4.55 L/42's, Gain/Downy fabric softener 2.4 L-3.29 L, beads 515 g, Downy/Tide Rinse 48 oz, Bounce Sheets 240's, selected varieties 21405182\_EA/20965291\_EA

**16.99** Tide laundry detergent 3.4 L, Downy fabric softener 2.98-4.16 L, Tide PODS 57/43's, Downy/Gain beads 680 g, selected varieties 21454815\_EA/21549792\_EA

**4.99** Dawn 825 - 982 mL, Dawn EZ Squeeze 535 - 650 mL, Dawn Powerwash Refill 473 mL, selected varieties 21430569\_EA/21516486\_EA

**4.49** Febreze Air 250 g, Car 2 mL, Mr. Clean All Purpose Cleaner 1.2 L, selected varieties 21005017\_EA/20976906\_EA

**12.99** Swiffer Duster Refills 6-10's, Wet Refills 12-24's, Dry Refills 16-32's, selected varieties 21176851\_EA/21176876\_EA

**17.99** Charmin Bath Tissue, 12-48 Rolls, selected varieties 21549779\_EA/21484810\_EA

**17.99** Bounty Paper Towels, 6-12 21515966\_EA

**10.99** Bounty Napkins 400's 21053171\_EA

© 2024 P&G

# Same Size. Less Plastic.

**\$2 Value**

**2,000<sup>PH</sup>**

**\$8.99\***

**SIMPLY ORANGE JUICE**  
2.63 L  
21592119\_EA



**\$2 Value**

**2,000<sup>PH</sup>**

**\$7.49\***

**GOLD PEAK ICED TEA**  
2.63 L  
21592193\_EA



Made with 12% Less Plastic.

\*Plus applicable taxes, levies, deposits and fees. Valid at participating locations for a limited time. Subject to availability while supplies last. Retailer may sell for less.   
© The Coca-Cola Company, used under license.

## START YOUR ACTIVIA GUT HEALTH CHALLENGE

**2 ACTIVIA PER DAY FOR 14 DAYS**



**\$4.49**  
ACTIVIA® - 650 g  
2068634\_EA



**\$4.49**  
ACTIVIA® - 2 x 100 g  
2068642\_EA



**\$11.99**  
ACTIVIA® - 2 kg  
2047289\_EA

less than 2 \$2.29 ea.  
**2/3.50**  
ACTIVIA® - 100 mL  
21348503\_EA



**\$7.49**  
ACTIVIA® - 12 x 100 g  
2030342929\_EA



**\$6.49**  
ACTIVIA® - 8 x 100 mL  
2143052\_EA



Activia may help reduce the frequency of minor digestive issues like: bloating, gas, discomfort and rumbling when consumed twice\* per day for 2 weeks as part of a balanced diet and healthy lifestyle. \*2 servings.

## CREAMY TEXTURE, ANYTIME, ANYWHERE

less than 2 \$2.29 ea.  
**2/3.50**  
Oikos® - 100 mL  
21402298\_EA



less than 3 \$4.79 ea.  
**3/\$12**  
Oikos® - 4 x 100 g  
2049375005\_EA  
2049375004\_EA

**\$6.99**  
Oikos® - 550/750 g  
21009880\_EA



### 10-HOUR BREW BOLD AND SMOOTH TASTE



less than 2 \$8.99 ea.  
**2/14.50**  
Stok® - 1.42 L  
21213739\_EA  
21213737\_EA



### LOW IN SUGAR BIG ON TASTE

**\$4.49**  
Two Good® - 4 x 55 g  
21475047\_EA



**\$4.99**  
Two Good® - 625 g  
21475047\_EA



### DANONE GO!

less than 3 \$1.29 ea.  
**3/\$3**  
Danone Go® - 190 mL  
21349387\_EA/21349323\_EA



### DANONE Danino

less than 2 \$4.49 ea.  
**2/\$7**  
Danino® - 6 x 93 mL  
21520245\_EA



Activia® / Danone Go® / Two Good® / Danino® used under lic. © 2024 Die Dairies Danone. Oikos® used under lic. © 2024 Danone US, LLC. Stok® © 2024 WhiteWave Services, Inc. All rights reserved.