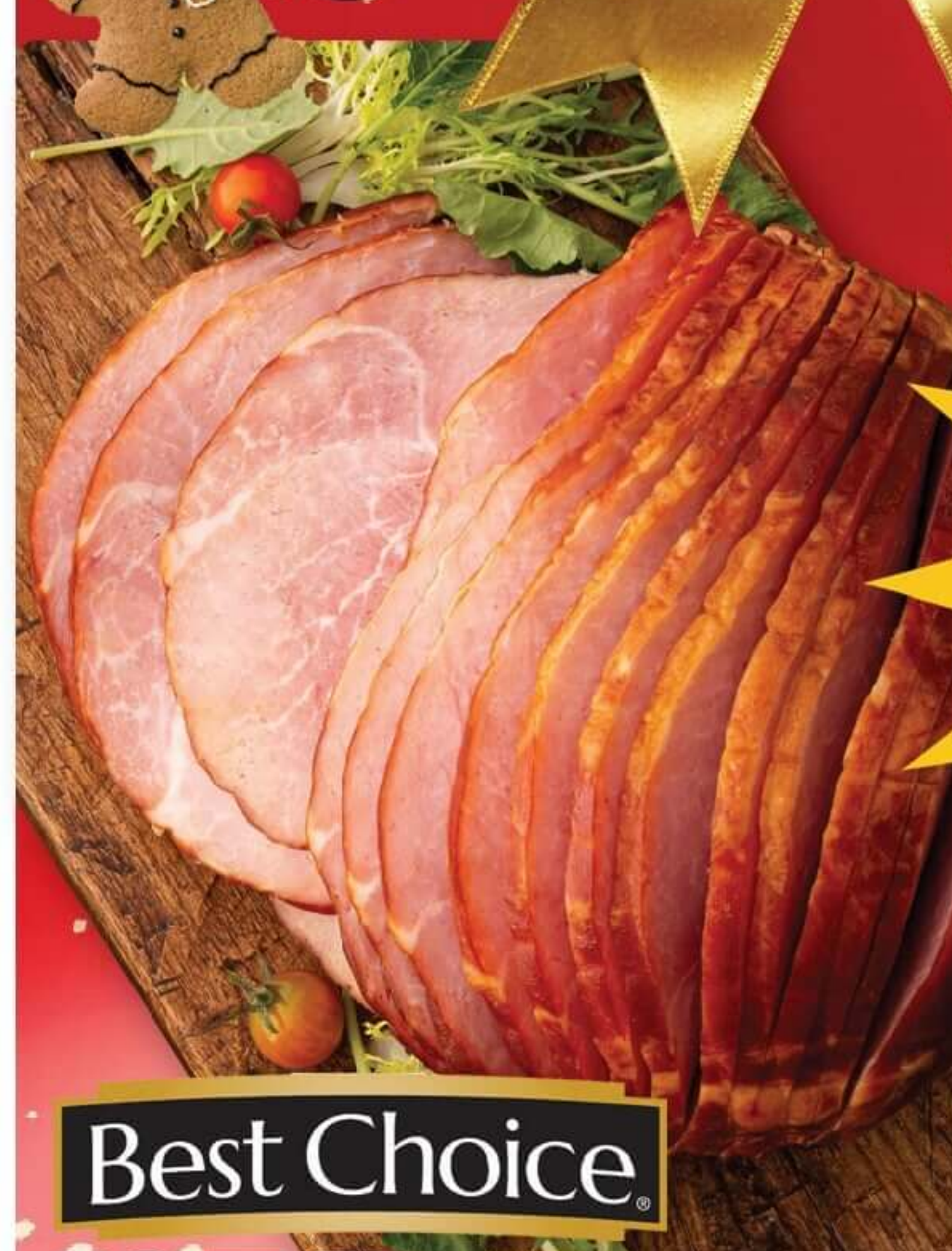


# Happy Holidays



**\$2.39** lb

PLUS 10% AT CHECKOUT

Best Choice

**BONE-IN SPIRAL SLICED HALF HAM**



**\$2.98** lb

PLUS 10% AT CHECKOUT

SOLD IN 4 LB PKG

Farmland

**WHOLE BONELESS HAM**



USDA CHOICE  
**WHOLE TRI-TIP**  
**\$5.38** lb  
PLUS 10% AT CHECKOUT

**\$4.39** lb

PLUS 10% AT CHECKOUT

USDA CHOICE

**WHOLE BEEF BRISKET**  
SOLD IN CRYOVAC



MADE IN-HOUSE  
**TORTILLA CHIPS**  
**\$2.12** lb  
PLUS 10% AT CHECKOUT

**\$4.99** ea

PLUS 10% AT CHECKOUT

**MADE IN-HOUSE 7 LAYER BEAN DIP**



**\$7.18** ea

PLUS 10% AT CHECKOUT

**FOLGERS CLASSIC ROAST COFFEE**  
25.9 OZ.



**\$5.95** ea

PLUS 10% AT CHECKOUT

**MARIE CALLENDER'S CREAM OR FRUIT PIES**  
24.5-40 OZ. SELECT VARIETIES



**\$2.67** ea

PLUS 10% AT CHECKOUT

**RED DIAMOND ICED TEA**  
ONE GALLON

# Happy Holidays

ROTEL  
DICED TOMATOES  
W/GREEN CHILES  
10 OZ.  
\$1.25 ea  
PLUS 10% AT  
CHECKOUT



**\$6.74** ea

PLUS 10% AT CHECKOUT

**VELVEETA BLOCK CHEESE**  
32 OZ. SELECT VARIETIES



**\$2.24** ea

PLUS 10% AT CHECKOUT

**PHILADELPHIA CREAM CHEESE**  
8 OZ.

Santa's  
FAVORITE  
COOKIE

**\$2.24** ea

PLUS 10% AT CHECKOUT



**NABISCO CHIPS AHOY! COOKIES**  
7-13 OZ. SELECT VARIETIES



**\$3.67** ea

PLUS 10% AT CHECKOUT

**TURKEY HILL PREMIUM ICE CREAM**  
1.44 QT. SELECT VARIETIES



**\$2.00** ea

PLUS 10% AT CHECKOUT

**HOSTESS DONETTES**  
9.5-10.75 OZ. SELECT VARIETIES



**\$3.57** ea

PLUS 10% AT CHECKOUT

**FARMLAND SLICED BACON**  
12-16 OZ. SELECT VARIETIES



**\$2.92** ea

PLUS 10% AT CHECKOUT

**WILLIAMS SAUSAGE ROLLS, LINKS OR PATTIES**  
12-16 OZ.

# King CASHSAVER

King of LOW Prices.

# Happy Holidays

**WE ARE OPEN CHRISTMAS DAY UNTIL 7PM**  
 FIND SAVINGS ONLINE OR IN-STORE AT [KINGCASHSAVER.COM](http://KINGCASHSAVER.COM)

WED 18	THUR 19	FRI 20	SAT 21	SUN 22	MON 23	TUES 24	WED 25
--------	---------	--------	--------	--------	--------	---------	--------

**50¢** ea  
PLUS 10% AT CHECKOUT

**BEST CHOICE CAN VEGETABLES**  
14.5 OZ. SELECT VARIETIES

**COOK'S BUTT PORTION HAM**  
\$1.98 lb  
PLUS 10% AT CHECKOUT

**\$7.69** lb  
PLUS 10% AT CHECKOUT

**\$2.22** ea  
PLUS 10% AT CHECKOUT

**KRAFT NATURAL BLOCK, SLICED OR SHREDDED CHEESE**  
5-8 OZ. SELECT VARIETIES

**COOK'S SHANK PORTION HAM**

**\$7.88** lb  
PLUS 10% AT CHECKOUT

**OZARK HEARTH BROWN 'N' SERVE DINNER ROLLS**  
12 CT.  
\$1.35 ea  
PLUS 10% AT CHECKOUT

**\$2.19** lb  
PLUS 10% AT CHECKOUT

**\$2.24** ea  
PLUS 10% AT CHECKOUT

**NABISCO SNACK CRACKERS**  
3.5-13.7 OZ. SELECT VARIETIES

**PRAIRIE FRESH WHOLE PORK BUTT**  
SOLD IN CRYOVAC

**\$5.27** lb  
PLUS 10% AT CHECKOUT

**White Supplies Last!**

**OZARK HEARTH BONELESS WHOLE PORK LOIN**  
SOLD IN CRYOVAC

**\$11.98** lb  
PLUS 10% AT CHECKOUT

## WE PRODUCE THE SAVINGS FOR LESS

**\$7.98** ea  
PLUS 10% AT CHECKOUT

**FRESH WHOLE PINEAPPLE**

**PRODUCT OF USA**

**SOLD IN 10 LB BAG**

**\$3.48** ea  
PLUS 10% AT CHECKOUT

**FARMER'S PROMISE RUSSET POTATOES**

**PRODUCT OF USA**

**\$7.65** ea  
PLUS 10% AT CHECKOUT

**CALIFORNIA CELERY**

## EVERYDAY LOW PRICES GUARANTEED

**LIMIT 2 TOTAL**

**\$2.70** ea  
PLUS 10% AT CHECKOUT

**BEST CHOICE BUTTER QUARTERS**  
16 OZ. SALTED OR UNSALTED

**\$2.23** ea  
PLUS 10% AT CHECKOUT

**KRAFT SALAD DRESSING**  
14-16 OZ. SELECT VARIETIES

**\$4.99** ea  
PLUS 10% AT CHECKOUT

**PEPSI 12-PACKS**  
12 OZ. CANS ASSORTED VARIETIES

AD PRICES EFFECTIVE 12/18/24 THRU 12/25/24

RECEIVE OUR AD IN YOUR INBOX EVERY WEDNESDAY!

# FRESH PRODUCE SAVINGS FOR LESS



**\$2.59** ea  
PLUS 10% AT CHECKOUT

**BLUEBERRIES**  
1 PT.



**\$1.41** ea  
PLUS 10% AT CHECKOUT

**CALIFORNIA CARROTS**



**\$1.94** ea  
PLUS 10% AT CHECKOUT

**NEVADA YELLOW COOKING ONIONS**



**\$3.62** ea  
PLUS 10% AT CHECKOUT

**CALIFORNIA SUNKIST MANDARIN ORANGES**



**\$3.75** ea  
PLUS 10% AT CHECKOUT

**MICHIGAN APPLES**  
**FUJI OR AMBROSIA APPLES**



**50¢** ea  
PLUS 10% AT CHECKOUT

**SEEDLESS SUNKIST NAVAL ORANGES**

## SEASONAL SAVINGS



**\$4.77** ea  
PLUS 10% AT CHECKOUT

**MOWI SKIN-ON SALMON PORTION**  
6 OZ.

**\$5.03** ea  
PLUS 10% AT CHECKOUT

**SEA BEST SHRIMP RING**  
10 OZ.

**\$5.72** ea  
PLUS 10% AT CHECKOUT

**SEA BEST SALMON FILLETS**  
1 LB.

**\$3.30** ea  
PLUS 10% AT CHECKOUT

**SALAD OF THE SEAS SEAFOOD DIPS**  
7 OZ. SELECT VARIETIES

**\$8.97** ea  
PLUS 10% AT CHECKOUT

**CATCH OF THE DAY COOKED SHRIMP**  
24 OZ.

**\$5.68** ea  
PLUS 10% AT CHECKOUT

**DOCKSIDE CRAB OR LOBSTER CAKES**  
10 OZ. SELECT VARIETIES

**\$7.20** lb  
PLUS 10% AT CHECKOUT

**SEA BEST RED ARGENTINE SHRIMP**  
18-20 CT.

**\$9.00** ea  
PLUS 10% AT CHECKOUT

**SEA BEST SHRIMP COCKTAIL TRAY**  
15.5 OZ.

**\$2.41** ea  
PLUS 10% AT CHECKOUT

**LOUIS KEMP CRAB CHUNKS, FLAKES OR LEGS OR LOBSTER CHUNKS**  
8 OZ. SELECT VARIETIES

# MERRY MEAT DEALS



**\$5.38** lb  
PLUS 10% AT CHECKOUT

**USDA CHOICE**

**TRITIP**  
SOLD IN CRY-O-VAC



**\$2.46** lb  
PLUS 10% AT CHECKOUT

**PRAIRIE FRESH**

**CENTER CUT BONELESS PORK LOIN ROAST**



**\$5.50** lb  
PLUS 10% AT CHECKOUT

**USDA CHOICE**

**FAMILY PACK TOP ROUND STEAK**



**\$3.34** lb  
PLUS 10% AT CHECKOUT

**Tyson**

**FAMILY PACK WINGS**



**\$3.95** lb  
PLUS 10% AT CHECKOUT

**MIDWEST RESERVE PREMIUM**

**FAMILY PACK 80% LEAN GROUND BEEF**



**\$2.46** lb  
PLUS 10% AT CHECKOUT

**PRAIRIE FRESH**

**FAMILY PACK BONE-IN PORK STEAK OR COUNTRY STYLE RIBS**



**\$2.80** lb  
PLUS 10% AT CHECKOUT

**FRESH VALUE PACK BONELESS CHICKEN BREAST**

# HOLIDAY TABLE SAVINGS



**VLASIC PICKLES**  
16-24 OZ. SELECT VARIETIES

**\$2.65** ea  
PLUS 10% AT CHECKOUT



**SWANSON BROTH OR STOCK**  
32 OZ. SELECT VARIETIES

**\$1.80** ea  
PLUS 10% AT CHECKOUT



**CAMPBELL'S CREAM OF CHICKEN OR MUSHROOM SOUP**  
10.5 OZ. SELECT VARIETIES

**\$1.15** ea  
PLUS 10% AT CHECKOUT



**STOVE TOP STUFFING MIX**  
6 OZ. SELECT VARIETIES

**\$1.80** ea  
PLUS 10% AT CHECKOUT



**JET-PUFFED MARSHMALLOWS**  
10-12 OZ. SELECT VARIETIES

**\$1.35** ea  
PLUS 10% AT CHECKOUT



**DOLE CAN PINEAPPLE**  
20 OZ. SELECT VARIETIES

**\$1.61** ea  
PLUS 10% AT CHECKOUT



**KRAFT DELUXE MAC OR VELVEETA SHELLS & CHEESE**  
9.4-14 OZ. SELECT VARIETIES

**\$2.67** ea  
PLUS 10% AT CHECKOUT



**HEINZ HOMESTYLE GRAVY**  
12 OZ. SELECT VARIETIES

**\$2.24** ea  
PLUS 10% AT CHECKOUT



**JELL-O GELATIN OR PUDDING MIX**  
0.3-12 OZ. SELECT VARIETIES

**\$1.26** ea  
PLUS 10% AT CHECKOUT



**BEST CHOICE GRANULATED SUGAR**  
4 LB.

**\$2.77** ea  
PLUS 10% AT CHECKOUT



**BETTY CROCKER FROSTING OR CAKE MIX**  
12.6-14.25 OZ. SELECT VARIETIES

**\$1.64** ea  
PLUS 10% AT CHECKOUT

**\$1.46** ea  
PLUS 10% AT CHECKOUT



**SWISS MISS HOT COCOA**  
6-8 CT. SELECT VARIETIES

**\$2.24** ea  
PLUS 10% AT CHECKOUT



**KRAFT MAC & CHEESE**  
5.5-7.25 OZ. SELECT VARIETIES

**90¢** ea  
PLUS 10% AT CHECKOUT



**AMERICAN BEAUTY PASTA**  
12-16 OZ. SELECT VARIETIES

**\$1.10** ea  
PLUS 10% AT CHECKOUT



**CLUB, TOWNHOUSE, OR KEEBLER CRACKERS & GRAHAMS**  
7.1-13.8 OZ. SELECT VARIETIES

**\$2.95** ea  
PLUS 10% AT CHECKOUT



**WELCH'S SPARKLING JUICE**  
25.4 OZ. SELECT VARIETIES

**\$3.42** ea  
PLUS 10% AT CHECKOUT



**GREEN GIANT STEAM CRISP CORN**  
11 OZ. SELECT VARIETIES

**\$1.39** ea  
PLUS 10% AT CHECKOUT



**OCEAN SPRAY CRANBERRY SAUCE**  
14 OZ. JELLIED OR WHOLE BERRY

**\$1.78** ea  
PLUS 10% AT CHECKOUT



**BUSH'S BLACKEYE PEAS**  
15.5-15.8 OZ.

**97¢** ea  
PLUS 10% AT CHECKOUT



**OZARK HEARTH BROWN 'N' SERVE ROLLS**  
12 CT.

**\$1.35** ea  
PLUS 10% AT CHECKOUT

## DAIRY FAVORITES



**SIMPLY JUICE**  
52 OZ. SELECT VARIETIES

**\$3.67** ea  
PLUS 10% AT CHECKOUT



**COFFEE-MATE ICED COFFEE OR COFFEE CREAMER**  
32-50 OZ. SELECT VARIETIES

**\$3.14** ea  
PLUS 10% AT CHECKOUT



**BLUE BONNET MARGARINE STICKS**  
16 OZ.

**\$1.30** ea  
PLUS 10% AT CHECKOUT



**PILLSBURY CRESCENTS**  
8 OZ. SELECT VARIETIES

**\$2.93** ea  
PLUS 10% AT CHECKOUT



**CHOBANI YOGURT**  
4.5-5.3 OZ. SELECT VARIETIES

**97¢** ea  
PLUS 10% AT CHECKOUT



**DAISY COTTAGE CHEESE**  
16 OZ. SELECT VARIETIES

**\$2.34** ea  
PLUS 10% AT CHECKOUT



**COUNTRY CROCK MARGARINE SPREAD**  
45 OZ. SELECT VARIETIES

**\$5.42** ea  
PLUS 10% AT CHECKOUT



**HILAND SOUR CREAM OR DIP**  
16 OZ. SELECT VARIETIES

**\$2.07** ea  
PLUS 10% AT CHECKOUT

## FROZEN FOODS



**BIRDS EYE STEAM VEGETABLES**  
10-10.8 OZ. SELECT VARIETIES

**\$1.24** ea  
PLUS 10% AT CHECKOUT



**LOUISA RAVIOLI OR TORTELLINI**  
18-22 OZ. SELECT VARIETIES

**\$4.06** ea  
PLUS 10% AT CHECKOUT



**FURLANI GARLIC BREAD OR TOAST**  
10 OZ. OR 6 CT. SELECT VARIETIES

**\$1.84** ea  
PLUS 10% AT CHECKOUT



**ORE-IDA FRIES, TOTS, OR HASH BROWNS**  
22-32 OZ. SELECT VARIETIES

**\$3.67** ea  
PLUS 10% AT CHECKOUT



**SISTER SCHUBERT'S DINNER ROLLS**  
8-10 CT. SELECT VARIETIES

**\$3.55** ea  
PLUS 10% AT CHECKOUT



**PILLSBURY PIE CRUSTS**  
12 OZ.

**\$3.02** ea  
PLUS 10% AT CHECKOUT



**COOL WHIP WHIPPED TOPPING**  
8 OZ. SELECT VARIETIES

**\$1.80** ea  
PLUS 10% AT CHECKOUT



**HILAND PREMIUM ICE CREAM**  
48 OZ. SELECT VARIETIES

**\$4.40** ea  
PLUS 10% AT CHECKOUT

## HOUSEHOLD ESSENTIALS



**HEFTY DELUXE CLEAR OR EZ GRIP CUPS**  
28-30 CT. SELECT VARIETIES

**\$2.83** ea  
PLUS 10% AT CHECKOUT



**HEFTY FOAM PLATES OR BOWLS**  
18-54 CT. SELECT VARIETIES

**\$2.04** ea  
PLUS 10% AT CHECKOUT



**HEFTY STORAGE BAGS**  
10-20 CT. SELECT VARIETIES

**\$2.45** ea  
PLUS 10% AT CHECKOUT



**FLORA BATH TISSUE OR PAPER TOWELS**  
6-12 RL. SELECT VARIETIES

**\$7.24** ea  
PLUS 10% AT CHECKOUT

# DELICATESSEN



**MADE FRESH DAILY  
ROTISSERIE CHICKEN**  
3.6-4 LB.

**\$6.99** ea  
PLUS 10% AT CHECKOUT



**SABRA HUMMUS**  
10 OZ. ASSORTED VARIETIES

**\$3.49** ea  
PLUS 10% AT CHECKOUT



**FIORUCCI PANINI**  
5-6 OZ. ASSORTED VARIETIES

**\$5.88** ea  
PLUS 10% AT CHECKOUT



**KRETSCHMAR SPECIALTY OR PREMIUM CHEESE PLATTERS**  
12 OZ.

**\$6.98** ea  
PLUS 10% AT CHECKOUT



**HORMEL GATHERINGS™ PARTY TRAYS**  
28 OZ. ASSORTED VARIETIES

**\$13.99** ea  
PLUS 10% AT CHECKOUT



**HORMEL GATHERINGS™ SNACK TRAYS**  
14 OZ. ASSORTED VARIETIES

**\$7.69** ea  
PLUS 10% AT CHECKOUT

# BAKERY FRESH



**OLSON'S CREME CAKES**  
16 OZ. ASSORTED VARIETIES

**\$4.49** ea  
PLUS 10% AT CHECKOUT



**KINGS HAWAIIAN® DINNER ROLLS**  
12 CT. ORIGINAL, HONEY WHEAT OR SAVORY BUTTER

**\$3.88** ea  
PLUS 10% AT CHECKOUT



**THE FATHER'S TABLE WINTER VARIETY CHEESECAKE**  
16 OZ.

**\$6.99** ea  
PLUS 10% AT CHECKOUT



**LOFHOUSE ICED CHRISTMAS SUGAR COOKIES**  
10 CT. ASSORTED VARIETIES

**\$4.49** ea  
PLUS 10% AT CHECKOUT



**COTTON BLUES QUARTER CHEESECAKE**  
1.2 LB. ASSORTED VARIETIES

**\$11.99** ea  
PLUS 10% AT CHECKOUT



**HEARTLAND 8" PUMPKIN OR SWEET POTATO PIE**  
HEARTLAND 8" PECAN PIE \$7.49 EA.

**\$6.49** ea  
PLUS 10% AT CHECKOUT

**90 MINUTE Heat & Serve**

## Holiday Dinners

Spend less time preparing and more time with family when you order our fully prepared meals

Customize your holiday dinner!

Scan to find out more information

\*Please Allow 48 Hours for Pickup  
Last Day to Order is December 23rd, 2024

# BEVERAGES

# LIQUOR

**COCA-COLA**  
12-PACKS  
12 OZ. CANS ASSORTED VARIETIES

**2 \$11**  
PLUS 10% AT CHECKOUT

**COCA-COLA OR DR PEPPER**  
2-LITERS  
ASSORTED VARIETIES

**\$1.29** ea  
PLUS 10% AT CHECKOUT

**COORS OR MILLER**  
24-PACKS  
12 OZ. CANS

**\$18.90** ea  
PLUS 10% AT CHECKOUT

**BAILEY'S IRISH CREAM OR CROWN ROYAL CANADIAN WHISKEY**  
SELECT 750 ML

**\$22.49** ea  
PLUS 10% AT CHECKOUT

**PEPSI**  
2-LITERS  
ASSORTED VARIETIES

**\$2.19** ea  
PLUS 10% AT CHECKOUT

**7UP, A&W OR RC COLA**  
2-LITERS  
ASSORTED VARIETIES

**\$1.29** ea  
PLUS 10% AT CHECKOUT

**TWISTED TEA**  
12-PACKS  
12 OZ. CANS

**\$14.39** ea  
PLUS 10% AT CHECKOUT

**ABSOLUT VODKA**  
SELECT 750 ML

**\$12.48** ea  
PLUS 10% AT CHECKOUT

**7UP, A&W OR RC COLA**  
12-PACKS  
12 OZ. ASSORTED VARIETIES

**\$4.39** ea  
PLUS 10% AT CHECKOUT

**GOLD PEAK ICED TEA**  
59 OZ. ASSORTED VARIETIES

**\$2.19** ea  
PLUS 10% AT CHECKOUT

**BUDWEISER**  
24-PACKS  
12 OZ. CANS

**\$19.80** ea  
PLUS 10% AT CHECKOUT

**BOTA BOX OR BLACK BOX WINE**  
SELECT 3 LITERS

**\$15.25** ea  
PLUS 10% AT CHECKOUT

**RECEIVE OUR AD IN YOUR INBOX EVERY WEDNESDAY!**  
FIND SAVINGS ONLINE OR IN-STORE AT KINGCASHSAVER.COM

WE PRICE OUR ITEMS AT OR BELOW OUR COST.  
\*Product cost is determined by the expense it takes to buy and get our merchandise from our suppliers to the shelf PLUS JUST 10% FEE AT THE CHECKOUT.

**PRICES EFFECTIVE  
12/18/24-12/25/24**

Copyright © 2024 Pyramid Foods. All rights reserved. Written permission is required before use.

12-18PG4-KCS\_V10