



# What's for Dinner?



WCM  
(Blueberry, Cinnamon & Marble)  
**Coffee Cakes** 24oz. **\$11.99 ea.**



WCM  
**Danish**  
All Varieties **\$3.99 ea.** 2ct.



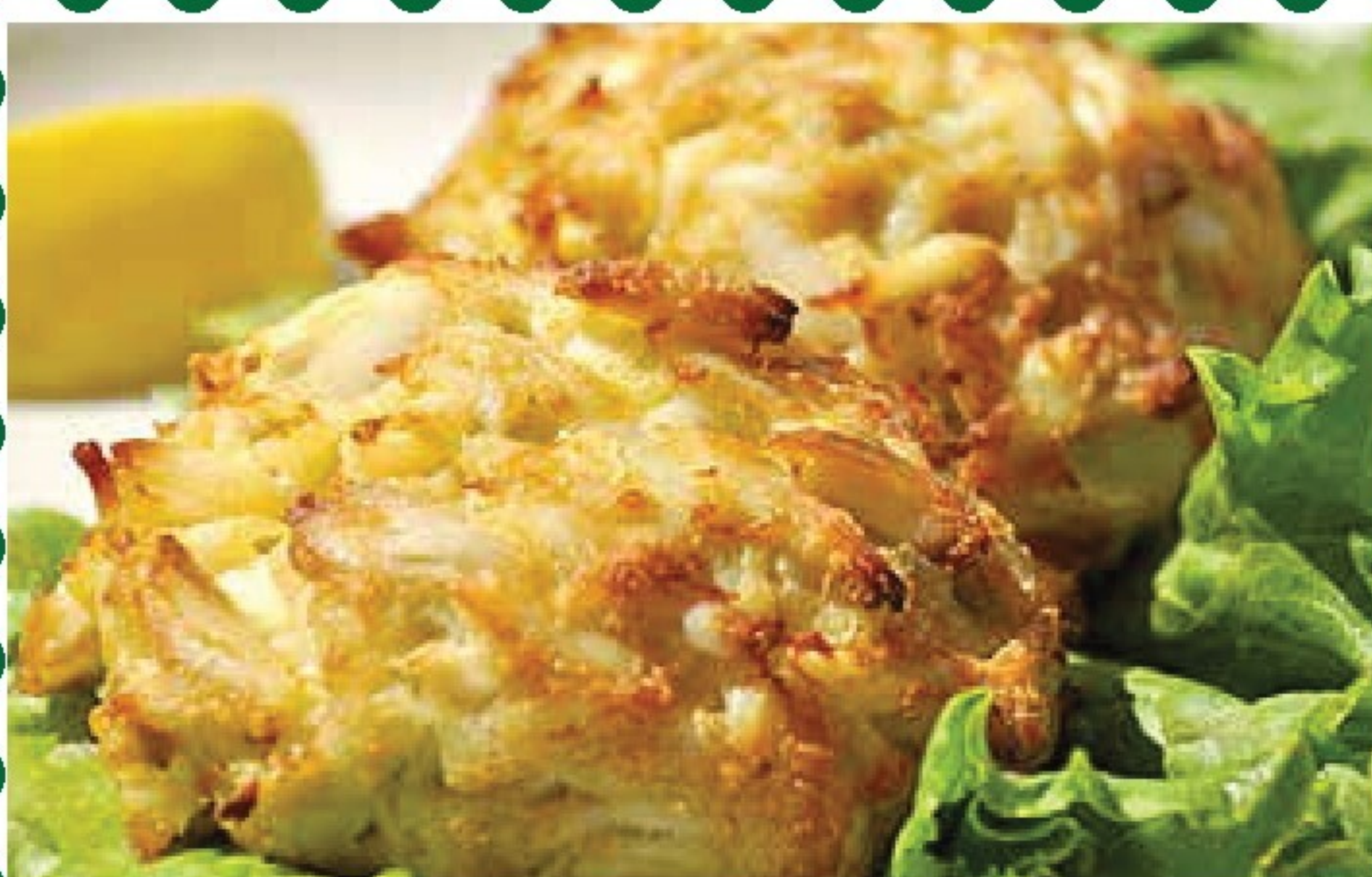
Daisyfield  
**Sliced Bacon** **\$5.99 lb.**



WCM  
**Spiral Ham** **\$5.99 lb.**



WCM Storemade  
**Sour Cream and Cheddar Hashbrowns** **\$6.99 lb.**



WCM Storemade  
**Crab Cakes** **\$13.99 ea.** 2ct.



WCM Maple Bourbon  
Marinated  
**Salmon Fillet** **\$13.99 lb.**



WCM Storemade  
**Polish Kielbasa** **\$7.99 lb.**



**Lemons** **99¢ ea.**



Idaho  
**Potatoes** **59¢ lb.**



**Broccoli Crowns** **\$2.49 lb.**



Artikaas Smoked or  
Danish Red Wax  
**Gouda Cheese** **\$8.99 lb.**



Philadelphia  
**Cream Cheese Brick** 8oz., or  
Kraft  
**Natural Cheese**  
(Shredded, Chunk, Crumbles  
or Slices) 5-8oz. **2/\$5**



Land O Lakes  
**Butter**  
**Quarters or Spreadable Tub** 15-16oz. **\$2.99 ea.**

Daisy Sour Cream 14-16oz. 2/\$5



Toft's  
**Ice Cream or Sherbet** **\$4.99 ea.** 1.5qt.



Birdseye  
**Steamfresh Vegetables or Rice** **4/\$5** 10-10.8oz.



Nabisco  
Ritz, Wheat Thins or Triscuit  
**Snack Crackers** **\$2.99 ea.** 7.1-13.7oz.



Betty Crocker  
**Frosting, Cake or Brownie Mix** **2/\$2** 13.25 -16.3oz. When you buy 2! Quantities less than 2 are \$1.50 each

Domino Sugar 4lb. \$3.49



Bounty  
**Paper Towels** 6 Double Plus Roll or Charmin  
**Bath Tissues** **\$14.99 ea.** 12 Mega Rolls



Swanson  
**Boxed Broth** **2/\$5** 32oz. Campbell's Cream of Mushroom or Chicken Soup 10.5oz. 4/5



3320 Briarfield Blvd., Maumee | 419.794.4000 | 26625 N.Dixie Hwy., Perrysburg | 419.872.6900

Hours: Mon - Sat 7 a.m. - 9 p.m. Sun 8 a.m. - 8 p.m.

Prices Effective March 30 - April 5, 2026

We reserve the right to limit quantities. No sales to vendors. No rainchecks. Not responsible for pictorial or typographical errors.



# Walt Churchill's Market



## WCM REWARDS


Offers Valid January 5th - April 5th, 2026



**Bananas**  
Limit 3lbs  
excludes organic  
**\$1.99/lb**  
when you  
redeem 100 points



**Toft's Milk**  
**\$1.49** 1/2 Gallon  
when you redeem  
150 points  
**\$1.99** 1 Gallon  
when you  
redeem 200 points



**Walt's Marinara Sauce** 24 oz  
**\$4.99**  
when you  
redeem 300 points



**Thumann's Executive Turkey**  
1 lb limit  
**\$3 Off**  
per lb when you  
redeem 300 points



**WCM Fresh Orange Juice**  
59 oz  
**\$9.99** when  
you redeem  
500 points



**Farm Raised Salmon** (limit 2 lbs)  
**\$8.99/lb**  
when you redeem  
300 Points



**Niagara Water**  
16.9 oz 24 pk  
**\$1.99**  
when you redeem  
200 Points



**Toft's Ice Cream**  
48 oz  
**\$2.99**  
when you redeem  
400 Points



**WCM Fresh Baked Baguette**  
18 oz  
**\$1.99**  
when you redeem  
300 Points



**Walt's Signature Chicken Salad** Limit 2lbs  
**\$7.99/lb**  
when you  
redeem 500 Points



**Organic Girl Salads**  
5 oz  
**\$2.99**  
when you redeem  
300 Points



**WCM Bagged Coffee** 12 oz  
**\$2 Off per lb**  
when you  
redeem 200 Points



**Bell & Evans Chicken**  
**\$2 Off per package**  
when you  
redeem 200 Points



**WCM Fresh Made Sushi Rolls**  
**\$2 Off**  
when you redeem  
200 Points



**DeCecco Pasta**  
8.8-16 oz  
**\$1 Off**  
when you  
redeem 100 Points



[www.WaltChurchillsMarket.com](http://www.WaltChurchillsMarket.com)



WaltChurchillsMarket.com

3320 Briarfield Blvd., Maumee | 419.794.4000 | 26625 N. Dixie Hwy., Perrysburg | 419.872.6900 |  
Hours: Mon - Sat 7 a.m. - 9 p.m. Sun 8 a.m. - 8 p.m.

